

SEMESTER STUDY: DECORATIVE ART AND DESIGN

Note: This course is available in the Spring semester only (January – May). Details are subject to change.

INTRODUCTION

This intensive one-semester course combines an examination of the historical and stylistic development of **Western European decorative arts, design and interiors of the late 17th to 21st centuries**, with an introduction to the professional world of working with objects from these centuries. It is aimed at those who wish to gain knowledge of the decorative arts, those interested in interior design, and those considering a career change into the art and interior design worlds. It also serves as a bridging course for students with an undergraduate degree in a subject other than art history who wish to apply for a postgraduate programme at Sotheby's Institute; in particular, it is an appropriate foundation for the MA in Contemporary Design (MACD) and the MA in Fine and Decorative Art (MAFDA).



The decorative arts are studied in relation to architecture and interiors, as well as in their wider social and historical context. Topics include the court art of Louis XIV, the development of porcelain at Meissen and Sèvres, the influence of trade with the East, and the renewed interest in antiquity at the end of the eighteenth century. Nineteenth-century topics include design reformers such as Pugin and William Morris, as well as the impact of Japanese design in Europe. In the twentieth century, the Art Deco style is studied alongside Modernism. The course concludes with an exploration of the plurality of approaches of recent decades, including Pop, Postmodernism and Conceptual Design.

The course is introductory and requires no prior knowledge of the field.

The teaching approach emphasizes **object-based learning**, enabling students to gain confidence in analyzing and identifying a wide range of art objects, both in a classroom setting and in numerous study visits to **London's world-class collections**. There are also visits to country houses, dealers and previews of relevant auction sales including Sotheby's, as well as a field trip to Paris. Students meet museum curators, auction house specialists and decorative art and design dealers. The unique opportunity to study objects close-up enhances students' critical and visual skills. The teaching is intensive and supportive, with an emphasis on individual and small-group learning. Students also gain valuable practical experience in delivering visual presentations.

STRUCTURE

The course is divided into two units taught consecutively across the semester. The first unit, **The Seventeenth and Eighteenth Centuries**, explores the late Baroque and Rococo styles, Neo-Palladianism and Neo-Classicism. The

second unit, **The Nineteenth and Twentieth Centuries**, investigates Historicism, Design Reform, Modernism and Postmodernism. Students are able to take one of the units only if preferred, or to take both units across different semesters.

CREDITS AND VALIDATION

For students interested in acquiring credits, the course is validated as Continuing Professional Development by the University of Manchester, one of the UK's leading universities. Students who complete the course successfully will gain 60 University of Manchester undergraduate credits.

This generally translates to 16 undergraduate credits or 12 graduate credits in the US system and 30 credits in the European (ECTS) system. Students currently enrolled at other colleges or universities should be aware that transfer of credit is always made at the discretion of the accepting institution. Therefore, applicants should confirm the feasibility of credit transfer with faculty advisors at their home school in advance of registration.



KEY TOPICS

The Seventeenth Century (25% of course – 15 UK credits; 4 US undergraduate credits; 3 US graduate credits; 7.5 ECTS credits)

- The Court of Louis XIV
- Glass and Ceramic Techniques
- Introduction to Tapestries
- Upholstery and Gilding

The Eighteenth Century (25% of course – 15 UK credits; 4 US undergraduate credits; 3 US graduate credits; 7.5 ECTS credits)

- Establishing the Rococo Interior
- Neo-Palladian Design
- Silver Techniques and the Silver Mark
- Chippendale and the Rococo
- Upholster

The Nineteenth Century (25% of course – 15 UK credits; 4 US undergraduate credits; 3 US graduate credits; 7.5 ECTS credits)

- Biedermeier
- The Historical Revivals
- The Gothic Revival
- Design Reform
- William Morris
- The Influence of Japan
- *Art Nouveau*

The Twentieth Century (25% of course – 15 UK credits; 4 US undergraduate credits; 3 US graduate credits; 7.5 ECTS credits)

- European Modernism and The Bauhaus
- French Art Deco and French Modernism
- Scandinavian Design
- Post-War Architecture and Design
- Postmodern Architecture and Design
- Design in the New Millennium

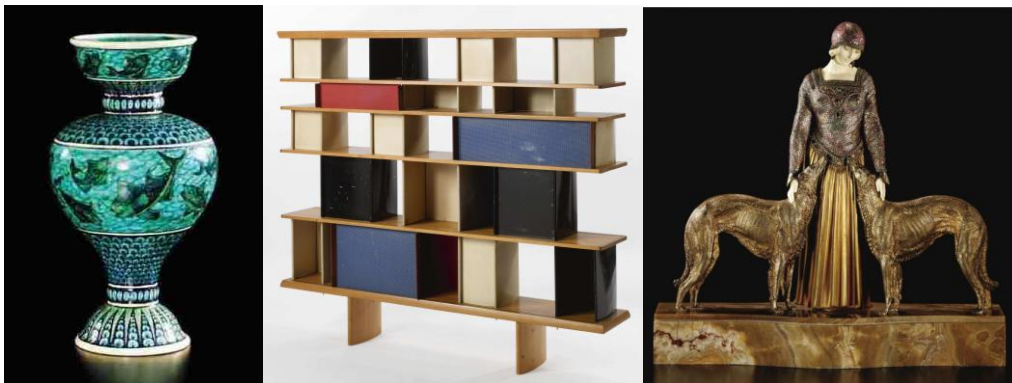
STUDY VISITS

London is a major centre for decorative arts and design. A wide variety of faculty-led visits to museums and galleries forms an integral part of the learning experience and enables students to gain a direct understanding of the design movements dealt with in the course. Sample venues:

- British Museum
- Geffrye Museum
- Goldsmiths' Hall
- Hampton Court Palace
- Salters Company
- Sotheby's Auction House
- Spencer House
- Victoria and Albert Museum
- Wallace Collection
- William Morris Gallery

FIELD TRIP

Included in the cost of the course is a two-day field trip to **Paris** which includes visits to top Parisian dealers and auction houses, the Musée des Arts Décoratifs (Louvre), the Musée d'Orsay and the Musée National de la Céramique (Sèvres).



ASSESSMENT

Students are assessed by a combination of slide tests, oral presentations, essays, descriptive exercises and research projects.

ADMISSION TO THE COURSE

There are no formal admission requirements except a good level of English language competence (a minimum IELTS score of 6.0). Applicants are interviewed informally in person or by phone. Our students are of all ages and come from a wide variety of educational and professional backgrounds. The international make-up of the student body at Sotheby's Institute of Art generates a rich and dynamic learning environment.

COURSE FEE

Full-time: £7,150

Part-time: £3,800

FACULTY

Jane Gardiner

Consultant Lecturer, Semester Courses

MA History of Art, University of London. Trained at the Victoria and Albert Museum, specialising in early European ceramics and glass. Jane has also lectured for the University of London, Michigan State University, the National Art Collections Fund, the National Trust and the Institut d'Études Supérieures des Arts (IESA), Paris.

Elisabeth Bogdan

Course Leader, Semester in Art and Business

MA in History of Design, Royal College of Art/Victoria & Albert Museum; BA (Hons) in Historical Geography, University of Toronto. Lis Bogdan was senior lecturer for eight years on Southampton Solent University's BA (Hons) and MA Fine Arts Valuation programmes, and has taught at Oxford Brookes University, the University of Wales Institute, Cardiff and the Victoria & Albert Museum. Her specialist teaching includes eighteenth- to twentieth-century European and American design, decorative art and architectural history, and she is a former Trustee of the Design History Society.

Lis Darby

Programme Director, MA Contemporary Design

PhD in History of Art, Courtauld Institute, University of London; MA in Art History, Courtauld Institute; BA (Hons) in Fine Art, Leeds University. Lis Darby's publications include *The Cult of the Prince Consort* (with Nicola Smith), the catalogue (with Benedict Read) of *E. Manning, Marble & Bronze: The Art and Life of Hamo Thornycroft*, and articles in various periodicals including *The Sculpture Journal*, for which she is a member of the Editorial Board.

Raymond Notley

Lecturer Emeritus; Consultant Lecturer, Semester Courses

Raymond Notley is the Lecturer Emeritus of Sotheby's Institute of Art where he has taught there since 1987. His wide range of interests includes the history of glass and ceramics, as well as design and decorative interiors. The latter includes many aspects of Russian art and manufacture. He has published and curated several glass-related exhibitions as well as donating items to many museums. He delivered the Robert Charleston Memorial Lecture of 1999.

Anne Ceresole

Former Director, Sotheby's Institute of Art

Anne studied architecture and art history at the University of Geneva. She came to London in 1967, and while lecturing for the Wallace Collection and the V&A Education Department she developed specialisms in the history of French furniture and of nineteenth and twentieth century British and continental design. She joined Sotheby's in 1981 and was Director of Sotheby's Institute of Art from 1992-2001. She is now a director of the Paris Institut d'Études Supérieures des Arts (IESA) and Chairman of the Decorative Arts Society of Great Britain.

Visiting lecturers in previous semesters have included:

Christine Lalumia - Deputy Director of the Geffrye Museum

Michael Krzyzanowski - Dealer in 20th and 21st century furniture and decorative arts

Annabel Westman - Textile historian and director of studies for the Attingham Trust

Mary Schoesser – Author of books on design and textiles

Lesley Hoskins - Writer, lecturer and exhibition curator, expert on wallpapers and domestic interiors

Adriana Turpin – Expert on furniture

Daniel Packer – Former Sotheby's specialist and expert on silver.

