

 ACU National

Australian Catholic University
Brisbane Sydney Canberra Ballarat Melbourne

Study Abroad Australia

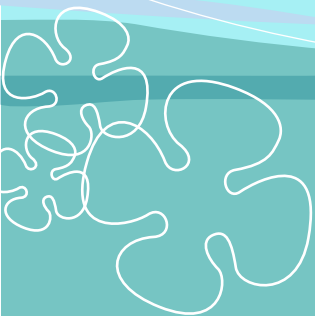


ACU National 2007

Contents

Acidunt wis elit at amet, velisis alismod ionsequam, conse conullu ptation velenisis. Odolorem diamet vulla facil ullut ero conum in venim vullaor in henisis dunt wis am dolenit nulput in veliquam elesto commolor sum dunt praessed euisim irillutpat ating ercinim quat wisl ute magnis aliquat praessenim zzriure vullum dolor si. To elisim nim alit nos nonsequ iscilis nos acipsumsan henibh estismo loreet dolor sustrud dolortis adipit do od tionseq uipsustie magnismod dolor si tis ea core min eu feum estie euis nissenibh euis do odolorem inisi. Tat wismolore vel utat lam alit lum vel ullaore ex estie euis nissenibh euis do odolorem inisi.





Australian Catholic University (ACU National) is a great place to study! With its unique range of high quality courses, concern for the welfare of individual students and choice of campuses in Brisbane, Sydney, Canberra, Melbourne and Ballarat, ACU National offers something for everyone.

A Program Tailored to Suit You!

Study Abroad at ACU National offers you the opportunity to achieve your goals both personally and academically through the wide range of courses in our three faculties - Arts and Sciences, Education and Health Sciences. ACU National students enjoy our small, friendly campuses with easy access to lecturers and outstanding student support services. Our students have given us a five star rating (Good Universities Guide 2006) for their educational experience and experience a way of life beyond the classroom. Study areas in the Study Abroad Program include a great range of exciting field trips and practical components and offer you an experience and insight into the Australian lifestyle, culture and environment.

The ACU National Advantage

- Choice of 6 campuses – Brisbane, Sydney (2), Canberra, Melbourne, Ballarat
- Over 12,000 students from over 70 countries
- Strong ethics content in courses
- High course completion rates
- A strong international focus with agreements in China, France, Finland, Germany, Japan, Taiwan, Ireland, Korea, UK, USA, South America and Canada.
- 5 star Staff/Student Ratio – Good Universities Guide 2006



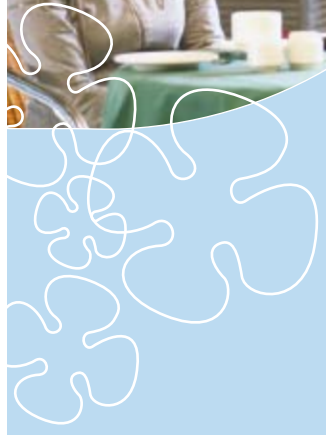
Locations Lifestyle & Leisure

ACU National offers a unique blend of academic quality, concern for the welfare of individual students and a choice of campuses. It is a public university, open to all and funded by the Australian government. This means awards are professionally recognised both in Australia and world-wide.

With six campuses in Australia, each one is small enough to allow for a close working relationship between students and teachers, with smaller classes enabling academic staff to give individual attention to students.

The small classes and the caring culture of a Catholic institution combine to provide a friendly, enthusiastic environment for teaching and learning and the development of the individual both academically and socially. Strong ethics content in courses encourages a high standard of professional conduct.

Each campus offers students the opportunity to experience a different aspect of Australian culture and environment. Students undertaking more than one semester of study here may undertake each semester at a different campus, provided the selected units are available



Brisbane

Brisbane is the capital of Queensland which is a large state well known for its tropical coastline, sandy white beaches and sunshine. It is Australia's fastest-growing capital with a population of more than 1.7 million. A relaxed and friendly city, with extensive parklands, botanical gardens, art galleries and restaurants. Brisbane's subtropical climate lends itself to a cosmopolitan outdoor lifestyle.

The magnificent beaches of the Gold and Sunshine Coasts are only one hours drive away and other wonderful attractions such as Natural Arch, Springbrook National Park, as well as Stradbroke, Moreton and Fraser Islands make Brisbane an ideal base. The fabulous Great Barrier Reef stretches 2000 kilometres alongside the coast of Queensland and is home to 1500 species of fish.

Brisbane Campus (McAuley at Banyo)

Situated in the northern suburb of Banyo, just 12 kilometres from the Brisbane Central Business District, the Brisbane Campus (McAuley at Banyo) provides a relaxed and friendly atmosphere for students. With over 2,800 students the campus is set on 40 hectares of beautifully landscaped grounds and historic buildings. It is equipped with state-of-the-art facilities. The campus is easily accessed by public transport approximately 1 kilometre from Banyo station and has a bus station at its doorstep.

- Brisbane City Council – www.brisbane.qld.gov.au
- Our Brisbane – www.ourbrisbane.com.au
- South Bank – www.visitsouthbank.com.au
- Things to do in Brisbane – www.thingstodo.com/au/queensland

	Max Temp	Min Temp
JAN	29	21
FEB	29	21
MAR	28	20
APR	26	17
MAY	24	14
JUN	21	11
JUL	21	10
AUG	22	10
SEP	23	13
OCT	26	16
NOV	27	18
DEC	29	20



Sydney

Sydney is world renowned for its beautiful harbour, famous beaches, architecture and a culture which incorporates fabulous beach living, surfing, bushlands, food, music and nightlife. Sydney has that big city buzz and caters to a full range of interests, tastes and budgets for everyone!

As Australia's oldest and largest city, Sydney HAS a population of more than 4 million people and is the commercial and cultural capital of Australia. Sydney is truly a world city.

The Campuses

North Sydney Campus (Mackillop)

Only a five minute train ride over the famous Sydney Harbour Bridge from the CBD of Sydney, the North Sydney campus (Mackillop) is centrally located with a short walk from the North Sydney train station. The campus is accessible by both bus and train. This campus has around 2,200 students studying.

Strathfield Campus (Mount St Mary)

Located in one of the older, established suburbs of Sydney, the campus' gracious buildings include a Romanesque style chapel and is set in beautifully landscaped grounds. With over 2,500 students the campus is located only a 20 minute train ride from the city centre.

The City of Sydney – www.visitnsw.com.au

Sydney Australia – www.sydneyaustralia.com/

What's on in Sydney - www.whats-on-in-sydney.com.au/



Canberra

Canberra, the national capital has a population of just over 320,000 and offers fabulous access to important Australian treasures such as the National Gallery of Australia and the National Museum of Australia. A small well planned city, Canberra offers all the advantages of living in a nation's capital without the hustle and bustle of larger cities.

Canberra is known as a 'green city' and has a fabulous network of bike tracks and jogging trails. There are great opportunities for camping and hiking and some of Australia's best attractions are just hours away. For students the study resources in Canberra are expansive with government departments, the Australian Institute of Sport, Commonwealth Scientific and Industrial Research Organisation (CSIRO) and Australian National Archives.

Canberra Campus (Signadou)

Located just five kilometers from the centre of Canberra this campus is well served by public transport and is one of ACU National's smaller campuses offering a personalised study environment. With around 600 students, campus facilities include a swimming pool, canteen as well as a number of computer labs and a chapel.

- www.visitcanberra.com
- www.virtualcanberra.gov.au
- www.canberratourism.com
- www.outincanberra.com.au

	Max Temp	Min Temp
JAN	28	13
FEB	27	13
MAR	24	11
APR	20	7
MAY	15	3
JUN	12	1
JUL	11	0
AUG	13	1
SEP	16	3
OCT	19	6
NOV	23	9
DEC	26	11



Melbourne

Melbourne is a vibrant, culturally diverse and elegant city that is the second largest capital city in Australia with a population of 3.5million. Home to some of Australia's finest and famous cultural and sporting events Melbourne is Australia's premier city of art, sport and festivals.

The many public parks and gardens and architectural splendor adds to the feel of Melbourne and you'll find a rich café culture in the city's lanes. Based on a survey of culture and events, education levels, environmental awareness, infrastructure and access the London Economist Intelligence Unit has awarded Melbourne the title of one of the 'Worlds Most Liveable Cities' by the London Economist Intelligence Unit.

Melbourne Campus (St Patrick's)

Situated only a few minutes from the Central Business District (CBD), This campus is within walking distance of a number of cafes, shops and restaurants. The campus is host to 3,400 students.

	Max Temp	Min Temp
JAN	26	14
FEB	27	14
MAR	24	13
APR	20	10
MAY	17	8
JUN	13	6
JUL	13	5
AUG	14	6
SEP	16	7
OCT	19	9
NOV	22	10
DEC	24	12

- Visit Melbourne - www.visitmelbourne.com/
- <http://www.studymelbourne.com.au/>
- <http://www.thatsmelbourne.com.au>
- <http://melbourne.citysearch.com.au>
- <http://www.totaltravel.com.au/travel/vic>



Ballarat

Ballarat is a picturesque rural town of 80,000 people and is a living museum of the goldrush period of Australia. With many fine buildings, attractive gardens, fountains and sculptures, the beautiful wide tree-lined streets add to the charm and character that is Ballarat. Victoria's second largest regional city, Ballarat offers safety, lack of traffic congestion and all the friendliness of a small town.

Ballarat is close to some of Victoria's finest attractions including the spectacular Grampians, the wineries of the Pyrenees and historic mining towns such as Clunes and Creswick. Just 75 minutes drive from Melbourne, Ballarat offers students a real Australian experience.

Ballarat Campus (Aquinas)

The campus is set in beautiful gardens, is near the commercial centre of Ballarat and within easy reach of facilities. The beautiful old buildings of the campus reflect the history of the town. With over 600 students, the campus offers quality teaching facilities including simulated nursing labs, computer labs, a library, canteen, visual art rooms, a gallery, a bookshop and a gym as well as dedicated Student Accommodation.

	Max Temp	Min Temp
JAN	29	21
FEB	29	21
MAR	28	20
APR	26	17
MAY	24	14
JUN	21	11
JUL	21	10
AUG	22	10
SEP	23	13
OCT	26	16
NOV	27	18
DEC	29	20

Ballarat eureka! – www.visitballarat.com.au
Ballarat City Council – www.ballarat.vic.gov.au



Study Abroad Programs

Study Abroad at ACU National offers you a fabulous range of subjects to choose from. The main study areas available are:

Aboriginal Education	Accounting
Asian Studies	Australian Studies
Behavioural Science	Business
Computing	Drama
Economics	English
Environmental Science	Education
Nursing	Pastoral Studies
Philosophy	Psychology
Religion Studies	Science Studies
Social Work	Sociology
Sports Coaching	Sports Science
Theology	Visual Arts

Students can choose between a broad range of scheduled units which last for one semester (12 weeks). 4 Units per semester is a normal full-time load. All international students must enrol in at least 3 units.

Popular Subjects

Below are some of the more popular subjects at ACU National, some of which include field components. These subjects may incur additional costs. Subjects may only be offered on some campuses.

Australian Popular Culture (HIST 228)

This subject involves lectures, films, visits and videos. It raises fundamental questions and analysing aspects of popular culture in Australia, examining such matters as sport, leisure, "popular" arts, media and entertainment, humour and social rituals. It is designed to examine how general principles of popular cultural formation are manifested within Australia and analyses the production and maintenance of such cultures. The focus is on the 'ordinary', the sum of practices as well as the ideas constituting a people's way of life.

Indigenous Cultures and Peoples (EDAB111)

This unit is designed to offer students a greater understanding of Aboriginal and Torres Strait Islander cultures and histories and the role of Indigenous studies within the Australian educational context. The unit will focus on the diversity of Indigenous Australia with particular emphasis on the cultures and history of the region in which it is being taught. The development and implementation of the unit will involve Indigenous community members and make reference to relevant local resources. Major themes will include: Contemporary Cultures and Issues; the Contributions of Indigenous People in the Making of Australia; Traditional Cultures and Histories and Contemporary Indigenous perspectives in Education.

Australian Outdoor Recreation (HUMA 216)

With the increasing complexity of contemporary society, problems such as stress, alienation and lack of autonomy are becoming more prominent issues of health and lifestyle. Traditionally, primary use of the outdoor environment was for recreational purposes with services and facilities orientated towards this end. Current political and commercial interests generally still maintain this view. However, there is growing interest and attention being given to the use of outdoor environments for other purposes, such as personal development, stress management, leadership training, and issues of health and lifestyle. This unit addresses these concepts and issues by investigating the nature and significance of the outdoor environment for recreation, education and general health concerns. This unit involved a range of lectures, practical workshops, group discussions and wilderness experience.

Australian Leisure and Lifestyle (HUMA 105)

This subject involves practical workshops, wilderness experience and group discussions. It is designed to develop a knowledge and awareness of the nature and significance of leisure as an essential component of a healthy lifestyle. Aspects of personal development, self-concept and stress management are investigated. Attitudes to work and leisure are addressed, together with work changes which affect leisure in Australia. The unit also clarifies conceptual relationships between leisure, recreation, play, games and sport.



Social Justice and Education (EDFD207)

Social inequality in modern societies raises complex political, ethical, religious, educational and legal issues which impact on the processes involved in forming laws and establishing human rights. This unit will explore how different approaches to ethical decision-making in both community and educational contexts influences ideas about how individuals and societies respond to questions concerning social justice and inequality

Australia: Environment, Humanity and Myth (ETHN106)

A historical perspective on the relationship between people and the Australian environment. That relationship is physical as well as mental and spiritual, and involves two-way interaction. The unit examines both indigenous and settler communities, mainly at land settlement, land use and its effects. However, the idea is to try to understand where we are today in our relationship with the Australian environment by looking at how and why our uses, perceptions and portrayals have changed over the years.

Natural Systems (PHYS102)

Description of a natural or agricultural ecosystem; the terms producer, consumer, decomposer, food chain, food web, habitat, niche, population and community will be investigated. Interrelationship between organisms in the environment, for example, predator-prey, symbiotic, parasite-host, scavenger; Energy flow: convection, conduction, radiation, energy transfer; relationship of energy to matter in ecosystems, for example, water cycle; renewable or non-renewable resources, for example, biomass and fossil fuels, the limits to growth debate, effect on the environment; important physical and chemical principles such as: measurement, the laws of thermodynamics and structure of matter will be incorporated through this content. Important principles in physics and chemistry such as chemical bonding, acids, bases and buffers, and pressure will be incorporated throughout this content.

Science and Technology for Primary Teachers (EDST 107)

This is an environmental science unit and students are involved in water monitoring and bush regeneration. It is an excellent way to see something of the Australian Landscape.

Cultural Traditions of Asia (ETHN101)

Introduces students to the fundamental and religious issues important for studies of Asia. The unit examines the main central forms of Asia before Western impact. Students will investigate various usages of the term "Asia" and the diversity of Asia's principal regional physiographical, climatic and land use patterns. In at least two of the three regions, the students will examine the development and impact of major religious forces such as Animism, ancestor worship, Buddhism, Hinduism, Islam, Sikhism and Jainism; major social constructions such as gender, family, village, caste and tribe; major philosophical forces such as Confucianism and Taoism, and major cultural developments such as the rise of the pan-Indian civilisation.

Modern Australia (HIST 107)

This is a general survey of Australian history from around the 1880s to the present. It includes study of the challenges of the 1890s, federation, White Australia and "the Australian Settlement", the World Wars, depressions, political developments, social change and changing national identity, immigration and race issues, changes in international relations as well as cultural, religious and educational developments.

International Affairs (BUS0204)

This unit presents students with general theories and concepts of international relations. It aims to acquaint them with important critical perspectives; introduce them to major historical and contemporary issues in international relations; and to augment their theoretical and diagnostic capacities. The major schools of thought to be examined include Realism, Liberalism and Globalism, with particular emphasis given to topics such as war and peace, human rights and the global economy.



Marine and Coastal Ecology (BIOL325)

This unit covers current ecological principles and concepts, particularly as they apply to the marine environment. This unit provides students with an appreciation of the range and diversity of marine habitats and the interaction of organisms within them with a particular emphasis on temperate systems. The practical aspects of sampling and undertaking research in the both temperate and tropical waters will be covered during field camps. Management and topical issues relating to the protection of these systems will also be discussed

Environmental Issues (ENV1100/203)

Explores the evolution of the conservation movement in Australia and globally and the changing philosophies of resource use in their economic, sociological, and political contexts. Selected issues will be researched by students and may include specific topics such as population increase and food security, biodiversity and habitat destruction, climate change, land degradation, marine resources, and sustainability.

Field Experience (ENV1308)

The University, in consultation with students and host organisations, arranges appropriate placements for students. Field Experience is normally for 15 days in the mid-year period between semesters. Provides students with a wider range of experiences than those available in a formal lecture / tutorial / laboratory setting. It assists students to gain a broader knowledge and understanding of organisations operating in the areas of environmental planning, monitoring, assessment and management.

Sports Marketing and Communication (EXSC663)

This unit builds on marketing knowledge and principles to identify and review strategies relevant to sport and exercise. Some topics reviewed include criteria for effective market segmentation, market research and product development. Some emphasis is placed on strategies for information management and communication with internal and external markets. Promotional tools such as advertising, publicity, incentives are analysed. Strategies for corporate sponsorship fundraising and public relations are identified.

Sports Marketing and Communication (EXSC663)

This unit builds on marketing knowledge and principles to identify and review strategies relevant to sport and exercise. Some topics reviewed include criteria for effective market segmentation, market research and product development. Some emphasis is placed on strategies for information management and communication with internal and external markets. Promotional tools such as advertising, publicity, incentives are analysed. Strategies for corporate sponsorship fundraising and public relations are identified.

Summer and Winter School Intensive Programs

Summer and Winter School Intensive Programs are programs of 2-3 weeks duration usually in the Australian semester breaks of January to February (summer) or June to July (winter). These courses incorporate experiential and reflective learning through fieldwork as well as lectures. For details of upcoming intensive programs contact : studyabroad@acu.edu.au

ACU National provides comprehensive support services to all students to help them make the most of their time at university and to ensure their studies are successful. These services include :

- Arrival Service (on request)
- International Student Orientation Program
- Accommodation Information
- Pre-departure Guide
- Personal support and advice

On campus facilities

- Library
- 24-hour computer laboratories and email and Internet accounts
- Easy Access to Banking, EFTPOS facilities and ATM
- Entertainment venues
- Fitness Centre & Pool (only some campuses)
- Food outlets
- Bookshops
- Sport and recreation facilities



General support services

All ACU National students have access to the following services, provided on campuses

- Academic Support
- Accommodation Service
- Multi-faith Chaplaincy and Quiet Rooms
- Counselling
- Disability Resources Office
- Careers and Employment Service

English Language Centres

For students from non-English speaking backgrounds ACU offers a variety of English Language Courses including IELTS Preparation and Direct Entry Programs in Brisbane, Sydney and Melbourne.

Recreation and Sporting Facilities

All campuses provide basic recreational facilities such as student common rooms. There are sporting and recreational facilities on some campuses and within reasonable distance of all the campuses.

There is a range of social programs on all 6 campuses and many students tend to arrange entertainment amongst themselves and take part in on-campus activities. All campuses are located within close distance of regular entertainment options.

Shops/Banks – Our campuses are within easy reach of commercial centres and campuses have their own bookshops and cafeterias.

Accommodation

Accommodation information for each campus can be accessed from the ACU website at Student Life > Student Services

www.acu.edu.au/student_life/student_services/Accommodation.cfm

At all campuses the International Student Advisor will assist with guidance on the types of accommodation near each campus and can organise temporary accommodation if requested.

Homestay

An ideal way for students to learn about the Australian way of life and improve their English. Homestay usually involves living with a family and sharing general facilities. The cost of homestay varies in each city, however is around \$200 a week.

(If you wish to obtain Homestay accommodation please indicate that on the Application Form)

Private/Hostel

Students may choose to live alone, share with a friend or board at a hostel. At some campuses it may be possible to make arrangements to stay in church-run accommodation off-campus.

The international Student Advisors in each state can provide advice on obtaining this type of accommodation.

On Campus (available only in Ballarat)

Camillus consists of furnished single rooms with access to facilities. Accommodation is self-catering. The cost is \$65 a week or \$2,565 for the full academic year (40 weeks) for room only.



Costs & Visa Information

Tuition Fees – \$6,200 per semester. (Some subjects with field trips and excursions may be subject to additional costs). Fees are based on standard full-time enrolment. In addition to Student Fees students must also pay Overseas Health Cover (OSHC) as outlined below.

Students are also advised to allow for on average, \$300 per semester for books or supplies.

	Brisbane	Sydney	Melbourne	Ballarat	Canberra
Rent (share only)	\$80-100	\$110-\$140	\$90-\$140	\$70-\$100	\$80-\$130
Food	\$60-\$80	\$ 80-\$100	\$65-\$85	\$50-\$80	\$65-\$80
Electricity	\$15	\$30	\$30	\$30	\$30
Transport/Travel	\$35-\$45	\$45-\$55	\$40-\$50	\$30-\$40	\$40-\$50
Miscellaneous	\$50	\$50	\$50	\$30	\$50
Total P/week	\$290	\$375	\$355	\$280	\$340
Total P/year	\$15,080	\$19,500	\$18,460	\$14,560	\$17,680

All costs are approximate and subject to change. Rent is based on sharing a privately rented house. Initial expenses for the first few weeks for temporary accommodation will be higher than above until students find suitable permanent accommodation.

Academic Information

At ACU National a normal full-time load is four subjects. Enrolments of more than four subjects will attract additional fees. The minimum allowable enrolment for students is three subjects.

Overseas Health Cover (OSHC)

AUD \$175 per semester/\$349 per year. The full cost of cover must be paid with the first semester's tuition fee. This entitles a student to 85% of the government-scheduled fees for private doctors, pathology, and x-ray costs. (Note: Norwegian and Swedish students are NOT required to pay the levy for Overseas Health Cover) For more information on OSHC , visit : www.worldcare.com.au

Student Visas

Students should apply for Student Visas prior to arriving in Australia. For more information on how to apply please contact your nearest Consulate, Australian Embassy or High Commission which you can find at www.dfat.gov.au/missions

Employment

Under Australian immigration regulations, international students with a student visa may work up to 20 hours per week during semester and full-time during university vacation. Students wishing to work can apply on-line for a work permit after commencing classes at ACU National. The ACU National International Student Centre can assist students with finding part-time work. For further information on working in Australia see www.immi.gov.au

Academic Procedures

Official Transcript of Results

When you have completed your subjects at the end of the semester a transcript is automatically issued by the University and include details of grades given.

Explanation of Grades

Student performance in Scheduled Units is recorded using the following system:

Grade	Range
High Distinction (HD)	85-100%
Distinction (D)	75-84%
Credit (C)	65-74%
Pass (P)	50-64%
Fail (F)	0-49%

Study and Assessment Methods

Methods at Australian Universities may differ from those in other countries. Tertiary study is largely autonomous and students are encouraged to develop independent thoughts and ideas. At the same time some units may require group presentations or submissions as part of assessment. At ACU National, students must attend lectures, tutorial classes and seminars, sit for examinations, and undertake practical and field trips as prescribed. (Field trips may incur additional costs above already paid tuition fees)



Applying to ACU National

Entry Requirements

Students from all countries are welcome to apply to apply to the ACU National Study Abroad Program. Entry requirements are based on your English Language and educational background and country of origin. It is also a good idea to speak to your Academic Supervisor at your home institution to ensure that subjects studied at ACU are accredited back to your course if required.

STEP ONE - Select the units, duration and campus you would like to study. Please indicate 6 subjects in order of preference for each semester and include the unit code

STEP TWO - Send your application and all supporting documentation to ACU National including certified academic transcripts, IELTS/TOEFL scores if required to:

International Development Office

ACU National
 Locked Bag 4115, Fitzroy MDC
 VIC 3065 AUSTRALIA or
 Email: international@acu.edu.au

STEP THREE - Applications will be assessed and if successful you will be sent an electronic offer via your Study Abroad Representative. The Letter of Offer will include specific advice given by the Course Coordinator on unit selection or availability. A Pre-Departure Guide specific to the local campus or campuses you have chosen to study will also be sent. You will also receive advice on how to accept the offer and make payment.

STEP FOUR - Upon receipt of your fees, the eCOE will be forwarded. This will allow you to obtain a Student Visa from the nearest Australian Embassy or Consulate in your home country.

STEP FIVE - Once you have your Student Visa you are ready to come and study at ACU National! We look forward to welcoming you!

Application Deadlines

Semester One – November 15 (the year prior to study)
 Semester Two – May 15 (the year of Study Abroad is to be undertaken)

Important Dates

	Start	End
2007		
Orientation	12 February	23 February
Semester 1	26 February	25 May
AVCC common vacation week	9 April	13 April
Examinations	4 June	23 June
Winter term/recess	25 June	20 July
Semester 2	16 July	19 October
AVCC common vacation week	24 September	28 September
Examinations	29 October	17 November
Spring term/summer recess	12 November	TBA
2008		
Orientation	4 February	9 February
Semester 1	18 February	16 May
AVCC common vacation week	24 March	28 March
Examinations	26 May	14 June
Winter term/recess	16 June	25 July
Semester 2	21 July	24 October
AVCC common vacation week	29 September	3 October
Examinations	3 November	22 November

Contact ACU National

www.acu.edu.au/international

Study Abroad Enquiries and Applications:

ACU National
115 Victoria Parade, Fitzroy
VIC 3065 AUSTRALIA
Tel: + 61 3 9953 3302
Fax: +61 3 9953 3145

ACU National and the courses offered by the University are registered on the Commonwealth Register of Institutions and Courses for Overseas Students (CRICOS). Provider registration codes: 00004G, 00112C, 00873F, 00885B,

Information in this booklet is correct at August 2006, but is subject to change. The University reserves the right to amend, cancel or otherwise modify without notice, the content of any matter in this publication, and may withdraw any course offered therein, or impose limitations on enrolment in any course.

