

WORK IN NEW ZEALAND

"This entire experience has been incredible from the exotic wildlife, festivals, and beaches to the sometimes foreign English language! All of this has been made better by the fantastic group of friends I've made in my short time here." -Amy R.



- **Who:** Participants age 18-30.
- **When:** Year round; visas valid for up to 12 months.
- **Where:** Orientation in Auckland, jobs across New Zealand.
- **What:** Paid work placement for up to one year. Work positions available include waiting tables, bartending, fruit picking, IT, call center and event staffing, retails, and ski resort positions.
- **How:** First submit your Work Application, interview, then submit payment for the program: \$990.

"There's a reason the sun shines on New Zealand before anywhere else – every new day in Aotearoa is something to cherish! Small, remote and thinly populated, yes, but NZ punches well above its weight with its outlandish scenery, fabulous festivals, superb food and wine, and magical outdoor experiences. The world is a kinder, gentler, more respectful place down here! There are few countries on this lonely planet as diverse, unspoiled and utterly, utterly photogenic" -Lonely Planet

Discover the *Similarities*...Share the *Differences*...



PERKS

Job Placement Assistance.

Airport pick-up & orientation in Auckland.

2 night shared housing in Auckland with breakfast.

Social Activities Program.

Basic International Traveler's Insurance including Medical.

Full-time English speaking pre-departure and local support from our team of coordinators.



Join Our Community to ask questions:



Read blogs from current participants or email us: info@culturalembrace.com

PROGRAM DETAILS & FAQs

Work in New Zealand Offers:

- Practical international work experience
- An economical way to live and travel abroad
- An opportunity to broaden your perspective and worldview
- An opportunity to participate in and learn local cultural activities (e.g.: sports, music, cooking)
- Memorable travel experiences with the chance to see exotic sites you have always dreamed about
- The ability to make lifelong friends from around the globe
- A valuable work experience that strengthens your resume, exhibiting your diligence, independence, and intercultural experiences
- A great way to develop and support your self-confidence and interpersonal skills



Cultural Embrace Includes:

✓ **Job Placement Assistance**

You will have access to vacant job listings for up to 12 months. Our local representatives will help you utilize an easy-to-access online job databank and will also search and provide you with local New Zealand listings.

✓ **Compensation**

While each position offers a different salary, the average salary per hour is NZD\$15 and many positions include subsidized room and board. The minimum wage in New Zealand is NZD 12.75 (~US\$9.60) per hour.

✓ **Housing Assistance**

Cultural Embrace will help you find a clean, safe, and affordable room. Many jobs include housing or have employees that need a roommate. Your salary should be enough to cover your basic living expenses while abroad. Please note that short-term (weekly basis) housing leases are very common throughout New Zealand.

✓ **Visa Assistance**

Cultural Embrace will assist you with the information and paperwork necessary to obtain the appropriate visa. Please contact your local New Zealand Embassy or Consulate to check details, or ask your *CE* coordinator. Please note that any visa fees are the responsibility of the applicant. And, while we can assist you during the process, ultimately it is your responsibility to ensure that you have obtained the appropriate visa for your work experience. *Cultural Embrace* has no control over the visa process and cannot guarantee that your visa application will be accepted.

Discover the *Similarities*...Share the *Differences*...

♦ Cultural Embrace ♦ 7201 Bill Hughes Road Austin, Texas 78745 USA ♦ Phone: 512-469-9089 ♦
♦ Skype: Cultural.Embrace ♦ info@culturalembrace.com ♦ www.culturalembrace.com ♦

PROGRAM DETAILS & FAQs CONTINUED

✓ **Arrival Pick-Up and Jet Lag Package**

You will receive one voucher good for free transfer to your hotel. Hop off the plane and hop on the pre-designated shuttle and you will arrive at your pre-booked accommodations free of charge and stress.

✓ **Orientation and Training**

An orientation will inform you of New Zealand's laws, safety, work, social, and travel customs. Plus, assistance in setting up a bank account with ATM access, a tax file number, a cell phone account, and help finding housing or transportation (if applicable).

✓ **In-Country Assistance**

Participants are given a private mailbox in Auckland with mail forwarding to anywhere in New Zealand, free luggage storage for the first week of your stay, and 24/7 toll-free emergency assistance.

✓ **Social and Cultural Activities**

Fun social and recreational activities and excursions will be available throughout your time in New Zealand. This will provide you with a great chance to see local sites while meeting and making new friends in the Land Down Under. Some activities and excursions will have specified registration dates and additional nominal fees.

✓ **International Traveler's Insurance with Basic Major Medical Coverage**

Our policy provides basic medical coverage. Additional policies and premium plans are available at extra cost.

✓ **Cultural Embrace "Culture Kit"**

Before your departure, we will send you a cultural kit that is filled with useful tips, advice, information, and your insurance card to prepare you for your amazing adventure of living and working abroad.

✓ **Full-time Representation**

Cultural Embrace provides English-speaking representation in the United States and New Zealand prior to, during, and after your placement.



Requirements:

In order to participate in this work program, *Cultural Embrace* requires that you:

- Be 18-30 years of age (due to visa regulations)
- If not a U.S. citizen, you must be a college student or graduate



Discover the *Similarities*...Share the *Differences*...

♦ Cultural Embrace ♦ 7201 Bill Hughes Road Austin, Texas 78745 USA ♦ Phone: 512-469-9089 ♦
♦ Skype: Cultural.Embrace ♦ info@culturalembrace.com ♦ www.culturalembrace.com ♦

PROGRAM DETAILS & FAQs CONTINUED

- Have access to a minimum of NZD\$4,200 (~US\$3,160) while in New Zealand. This minimum amount does not have to be entirely in cash – traveler’s checks, bank statements, and credit/debit cards may also be presented. For visa purposes, you are required to show that you have immediate access to funds via bank accounts or parental help.
- Be open to foreign cultures and living abroad
- Have a high level of responsibility
- Enjoy working with others in a busy, fast-paced environment



2011 Program Fees:

US \$990

**Prices listed in US Dollars*

***Please note- Prices are subject to change according to exchange rates..*

Visa Information:

New Zealand’s labor department has recently elected to allow more foreigners the chance to work, providing today’s travelers with opportunities rarely available in the past. Their Working Holiday visa will allow you to earn a local wage, interact with the locals, and travel throughout New Zealand.

To qualify for the Working Holiday Visa, you must be from one of the following countries: Argentina, Belgium, Brazil, Canada, Chile, China, Czech, Denmark, Estonia, Finland, France, Germany, Hong Kong Special Administrative Region, Ireland, Italy, Japan, Korea, Latvia, Malaysia, Malta, Mexico, Netherlands, Norway, Peru, Poland, Singapore, Slovenia, Spain, Sweden, Taiwan, Thailand, UK, USA, or Uruguay.

You will have the flexibility to travel around New Zealand and work in a variety of environments and cultures. As soon as you are ready to take on a job, search the members-only employment database with over one hundred jobs available on a daily basis (access provided before departure and during your trip), and/or contact our local representatives who are dedicated to helping you with your job placement and answering any travel-related questions you may have.

How to Apply:

1. Obtain the **Work Abroad Application Forms & Procedures** documents in one of two ways:
 - (a) Download the forms from our website at www.culturalembrace.com
 - (b) Call *Cultural Embrace* at 1-512-469-9089 or Skype: Cultural.Embrace to have the forms mailed to you within 3-4 days.

Discover the *Similarities*...Share the *Differences*...

♦ **Cultural Embrace** ♦ 7201 Bill Hughes Road Austin, Texas 78745 USA ♦ Phone: 512-469-9089 ♦
♦ Skype: Cultural.Embrace ♦ info@culturalembrace.com ♦ www.culturalembrace.com ♦

PROGRAM DETAILS & FAQs CONTINUED

2. Read the instructions carefully and *complete all forms*.

3. Submit your completed application packet to:

Cultural Embrace
7201 Bill Hughes Road
Austin, TX 78745 USA



Completed packets should include the following:

- Work Program Application
- Signed Work Agreement
- University/College transcript
- Resume/CV in English
- Copy of your passport (information page only)
- Cover Letter in English explaining why you want to work in New Zealand
- Two References: preferably professional and/or character references
- Doctor's note verifying that you are in excellent mental and physical health
- Copy of Police Clearance (obtainable from your community's local police station)
- Two 1½" x 2" official passport-size photos, with your name printed on each photo
- One smiling full-length photo of yourself (for local coordinator to identify you)
- US\$250 non-refundable deposit (credited towards your program fee)

Upon receipt of your application, a *Cultural Embrace* coordinator will contact you for a 20-30 minute phone interview. Once we accept you in to our program, you will receive an invoice for the remainder of your program fee. In order for us to contact our local partners to start your placement process, we require at least 50% of your program costs.

We recommend submitting your application and program fee at least 3 months prior to your desired start date in order for us to organize and arrange your work placement.



**Cultural Embrace* requires an expedited application fee for those applying 12 weeks or less before the desired date of departure. Applications received 8-12 weeks prior to desired departure date will be charged \$150. Applications received fewer than 8 weeks before the desired departure date will be charged \$250.

Discover the *Similarities*...Share the *Differences*...

♦ Cultural Embrace ♦ 7201 Bill Hughes Road Austin, Texas 78745 USA ♦ Phone: 512-469-9089 ♦
♦ Skype: Cultural.Embrace ♦ info@culturalembrace.com ♦ www.culturalembrace.com ♦

PROGRAM DETAILS & FAQs CONTINUED

Frequently Asked Questions:

1) *Why should I pay to work abroad, and where does my money go to with Cultural Embrace?*

Cultural Embrace and our local partners in New Zealand specialize in assisting you with job placement, housing and insurance. This will alleviate the troubles and stress of getting everything organized in a new country, so you will have more time and energy to spend on your work and living abroad. Your time abroad will still be an independent and memorable one, but we are here to guide you to a safe, healthy and comfortable experience before, during, and after your adventure.



You will be assigned an experienced Program Coordinator from our Austin, Texas office. He/She will provide personalized attention to help pre-arrange your housing and travel needs. Once you go abroad, you will be assisted by our in-country representative to arrange your work placements, local bank, cell phone, and tax information, and will typically have a direct supervisor for your work position, as well.

Your program fee includes customized work assistance, airport transfer, orientation, arrival package, local wage, room and board in most placements, basic international traveler's insurance, and all of the administrative and logistical costs to set up your placement in the States and New Zealand. *Cultural Embrace* also pro-rates the expenses for marketing, advertising, and site visits/communication among all of our programs within our fees.

2) *What type of job placements can I expect?*

Jobs are typically in food and beverage, kitchen, hospitality, call center, agriculture, general labor and cleaning/housekeeping industries. Front desk or office work and chef/culinary positions are limited, yet remain available to those with experience. Being fluent in English will assure you an advantage with employers.



3) *What will my working schedule be like and can I take time off to travel?*

A wide variety of unique job listings are available on our members-only database. The database lists both part-time and full-time jobs with placement duration ranging from one day to six months. For full-time work, your schedule will be assigned by your employer, though most of these positions range from 35-42 hours per week with a 5- or 6-day work week. Of course you are encouraged to travel, but please consult with your employer if you plan to return to your job and want time off; if you wish to travel and find another company and/or destination, then our in-country representative can assist you with a new job and housing search. Please note that you may only work for any single employer for a maximum of six months, but with our database, you will have easy access to additional job postings for the remainder of your stay.

Discover the *Similarities*...Share the *Differences*...

♦ **Cultural Embrace** ♦ 7201 Bill Hughes Road Austin, Texas 78745 USA ♦ Phone: 512-469-9089 ♦
♦ Skype: Cultural.Embrace ♦ info@culturalembrace.com ♦ www.culturalembrace.com ♦

PROGRAM DETAILS & FAQs CONTINUED

4) *What is the application process like, and when will I have confirmation about my work placement?*

After we receive your completed application, you will be assigned a personal Program Coordinator who will work with you through your departure and beyond. He/She will conduct ~30 phone/web interview to discuss your background, goals, and expectations of a work placement. Then you will receive an invoice for the remainder of the program, and once we receive at least half of this fee, we will confirm your arrival instructions and enroll you in Orientation.

5) *What type of visa assistance does **Cultural Embrace** provide?*

Cultural Embrace will assist with preparation of visa documents. Please note that any visa fees are the responsibility of the applicant. And, while we try to assist you during the process, ultimately it is your responsibility to ensure that you have obtained the appropriate visa for your work experience. *Cultural Embrace* has no control over the visa process and cannot guarantee that your visa application will be accepted.

New Zealand has a Working Holiday Visa agreement with the following countries: Argentina, Belgium, Brazil, Canada, Chile, China, Czech Republic, Denmark, Estonia, Finland, France, Germany, Hong Kong, Ireland, Italy, Japan, Korea, Latvia, Malaysia, Malta, Mexico, Netherlands, Norway, Peru, Poland, Singapore, Slovenia, Spain, Sweden, Taiwan, Thailand, UK, USA, and Uruguay. You can apply easily online.



6) *Can I leave and re-enter New Zealand in the 12-month period?*

Yes, you can leave and re-enter New Zealand as often as you choose to within the 12-month period. For example: you arrive in New Zealand January 10. You then work at a hotel for 3 months, and then travel to Australia for two-months. You arrive back June 15th, and you still have 6 months left to work and travel in New Zealand.

7) *How long after the visa is granted must I travel to New Zealand?*

The visa is activated upon your entry into the country. Once it has been granted, you must enter within one year.

8) *Why is there an age requirement to work in New Zealand? Isn't that age discrimination?*

The Working Holiday Visa is meant to offer international youth an affordable experience and opportunity to visit and travel throughout New Zealand. The jobs available under this visa are typically unskilled/non-technical positions which will not affect the local economy and unemployment rate. Additionally, it is a reciprocated immigration law made with other countries, so similar (or even more stringent) requirements are mandated to New Zealand going abroad to work and travel.

Discover the *Similarities*...Share the *Differences*...

♦ Cultural Embrace ♦ 7201 Bill Hughes Road Austin, Texas 78745 USA ♦ Phone: 512-469-9089 ♦
♦ Skype: Cultural.Embrace ♦ info@culturalembrace.com ♦ www.culturalembrace.com ♦

PROGRAM DETAILS & FAQs CONTINUED

9) *Can I study on this visa?*

Only for four months. If you wish to study longer, you must get a student visa. You can apply for a student visa while in New Zealand.

10) *What are the eligibility requirements for this particular program and visa?*

In order to get a Working Holiday visa, you must meet the following requirements:

- A. You must have a valid passport.
- B. Be 18-30 at the time of application.
- C. Be outside of New Zealand at the time of application and granting of the visa.
- D. Be enrolled or be a graduate of a post-secondary institution (US citizens still qualify if not currently enrolled).
- E. Show proof of sufficient funds for the first part of your stay in New Zealand or at least have a return ticket. The guideline is to have proof that you have access to \$4200 New Zealand dollars. This can be in the form of a credit card, a letter from your bank, or traveler's checks.

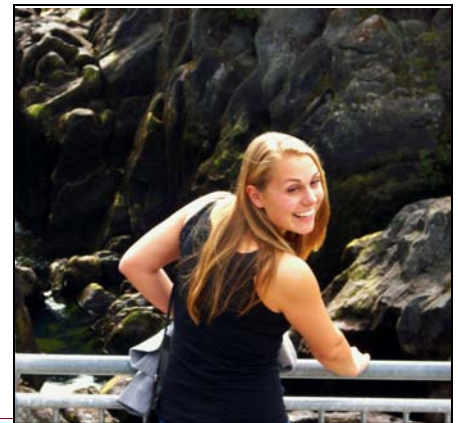


11) *What should I wear and bring to New Zealand?*

Don't bring more than you can easily fit into a traveler's backpack. We recommend black pants and a collared shirt for hospitality jobs, and generally casual dress for other work. Remember, most items will be readily available in New Zealand. However, we will provide you with more details in your *Cultural Embrace* pre-departure kit about your job and packing list.

12) *What types of housing options are available and how much does housing cost?*

Cultural Embrace's Work in New Zealand program offers the flexibility to decide exactly what sort of experience each participant wants. Since housing is so varied (per city, city center vs. suburbs, or beach-side accommodations; weekly or monthly leases in shared flats or youth hostels), *Cultural Embrace* does not pre-book your housing before you arrive in Auckland. However, when you arrive in Auckland, *Cultural Embrace* will have pre-booked 2 nights accommodations while you get to know the city, look for a job, and rest up from jet lag! You will be afforded a variety of options for your housing accommodations, and with dozens of other participants arriving each day, finding new roommates and friends should be a breeze. This way, you can pick your city, your accommodations, and your roommates!



Discover the *Similarities*...Share the *Differences*...

♦ Cultural Embrace ♦ 7201 Bill Hughes Road Austin, Texas 78745 USA ♦ Phone: 512-469-9089 ♦
♦ Skype: Cultural.Embrace ♦ info@culturalembrace.com ♦ www.culturalembrace.com ♦

PROGRAM DETAILS & FAQs CONTINUED

13) Can I work and/or live with a friend or partner?

Yes, you can enroll in this program with other people, however, please note that positions may be limited within a company. If you cannot arrange work together with the same employer, you will usually be able to organize your placements in the same area. Our local representative can help you arrange your accommodations together in a double occupancy, or organize single rooms in the same area. We encourage you to travel and explore your world with others. This enhances your experience and memories, and you can be rewarded for referring others to travel on a CE program.



14) Will I have free time while working in New Zealand?

Absolutely! Through this program, you will have a great chance to relax, travel, and explore this genuinely beautiful and unique continent. You will have the liberty to pick and choose your jobs, so you may opt to have a part-time job(s), full-time job, weekend job, etc. Our online members-only database will provide you with a list of vacant jobs, their locations (generally throughout New Zealand), their schedule, and duties and responsibilities. This provides you with the freedom to select where, when, and what you will do in New Zealand.

15) How long will it take to make my placement?

We ask applicants to apply at least 3-4 months in advanced of your desired start date. The placement may take less time than this, but we want to ensure that we have enough time to find a great placement for you! There are additional administrative fees if you apply less than 3 months in advanced, and we do not contact our local partners until we receive at least 50% of the program fee payment.

16) When should I buy my plane ticket and does **Cultural Embrace** provide any resources to help with plane tickets?

Plane tickets should not be purchased until after your placement has been confirmed. **Cultural Embrace** works with consolidators and discount travel agencies that can help find cheaper tickets than those that are available to the general public. We have a partnership with STA Travel (1-877-236-1048) for great student/youth rates, and they have a very nominal service fee if you need to make any changes before or during your travels.



Discover the **Similarities**...Share the **Differences**...

♦ **Cultural Embrace** ♦ 7201 Bill Hughes Road Austin, Texas 78745 USA ♦ Phone: 512-469-9089 ♦
♦ Skype: Cultural.Embrace ♦ info@culturalembrace.com ♦ www.culturalembrace.com ♦

PROGRAM DETAILS & FAQs CONTINUED

15) *What do I do if I have a problem or complaint within my work placement?*

You should first speak with your work supervisor or manager to give them an opportunity to explain or investigate the situation. If the complaint still exists, then please contact your local representative in New Zealand, as well as let *Cultural Embrace* (Austin office) know so we may diplomatically mediate on your behalf. Please note that you will be assigned an in-country representative that will assist you with any questions or concerns. We also encourage you to fill out our program evaluations.

16) *Is there someone I may speak to about their experience on this program, and being abroad?*

Yes, we have a network of current and past travelers that are happy to communicate with you. Due to confidentiality, please contact our Austin office to receive a list of names and contact information of participants and alumni that have agreed to be contacted by others. Additionally, we encourage you to check out, use, and get involved with our social media community. These community sites will provide great insight of what you should expect on your adventure abroad. Plus, we provide additional discounts to our community members!



Facebook Page (<http://www.facebook.com/CulturalEmbraceTravel>)

Twitter (<http://twitter.com/culturalembrace>)

Blogger (<http://www.culturalembrace.blogspot.com/>)

Youtube (<http://www.youtube.com/user/CulturalEmbrace1>)

A Few Words. . .

At *Cultural Embrace*, we want to facilitate experiences that, first and foremost, help individuals have a safe and healthy time abroad while becoming better acquainted with both themselves and the richly textured cultures of the world around them. Our partnerships grant program participants the opportunity to explore New Zealand first-hand while adding valuable content to their resumes. Working in New Zealand is, putting it shortly, a tremendously edifying experience that is sure to leave you with lasting memories and a renewed sense of purpose. So do yourself a favor: call *Cultural Embrace* straight away and let us start planning your once-in-a-lifetime international adventure!

For any questions, please do not hesitate to contact us at info@culturalembrace.com or by phone at 1-512-469-9089 or by Skype: Cultural.Embrace.

Discover the *Similarities*...Share the *Differences*...

♦ **Cultural Embrace** ♦ 7201 Bill Hughes Road Austin, Texas 78745 USA ♦ Phone: 512-469-9089 ♦
♦ Skype: Cultural.Embrace ♦ info@culturalembrace.com ♦ www.culturalembrace.com ♦