

VOLUNTEER IN AUSTRALIA OR NEW ZEALAND

“Turning a slope in the Blue Mountains into a set of stairs – a little bit of creativity and a lot of teamwork go a long way! In fact, the entire project was the best I’ve seen and would gladly work on it for 10 weeks straight if I could! Paul is an amazing team leader who made the experience so much better – he was really great (and a good cook on the barbecue, too). Thanks! An excellent experience!”
-Graham G.



- **Who:** Volunteers in good physical health between the ages of 18 to 70, or under 18 with parental consent.
- **When:** Any Friday year round, 1 week minimum, 6 month maximum.
- **Where:** Positions across Australia and New Zealand.
- **What:** Environmental, wildlife conservation, and construction volunteer projects.
- **How:** First submit your Volunteer Application, interview, then submit payment for the program: \$1340 (1 wk Australia, \$275 each additional wk) or \$1320 (1 wk New Zealand, \$265 each additional wk).

"From the prehistoric gorges of Kakadu National Park, to the white sails of the Sydney Opera House, Australia is a country as big your imagination, a place to be discovered, not feared." -Lonely Planet

"There's a reason the sun shines on New Zealand before anywhere else – every new day in Aotearoa is something to cherish! There are few countries as diverse, unspoiled and utterly photogenic." -Lonely Planet

Discover the *Similarities*...Share the *Differences*...



PERKS

Guaranteed volunteer placement.

Airport pick-up and transfer.

Basic and safe accommodations.

All meals.

Orientation & Training.

Basic International Traveler's Insurance including Medical.

Full-time English speaking pre-departure and local support from our team of coordinators.



Join Our Community to ask questions:



Read blogs from current participants or email us: info@culturalembrace.com

PROGRAM DETAILS & FAQs

Volunteer in Australia or New Zealand Offers:

- First-hand experience improving Australia or New Zealand's natural environment
- An opportunity to broaden your perspective and world-view
- An opportunity to participate in and learn local cultural activities (e.g.: sports, music, cooking)
- Memorable travel experiences with the chance to see exotic sites you have always dreamed about
- The ability to make lifelong friends from around the globe
- A valuable work experience that strengthens your resume, exhibiting your diligence, independence, and intercultural experiences
- A great way to develop and support your self-confidence and interpersonal skills



Cultural Embrace Includes:

- ✓ **Guaranteed Volunteer Placement Prior to Departure**
Cultural Embrace pre-arranges your volunteer project before you leave home to ensure an easy and hassle-free transition into your new life abroad.
- ✓ **Housing and Board**
Accommodations vary with each project and location. Typical housing includes caravans, hostels, shearers' quarters, bunkhouses, and camping (tents supplied). You should bring a sleeping bag and mat. All food provided. Breakfasts and lunches are typically self-made. Dinner is usually group effort in preparing and cleaning.
- ✓ **Visa Assistance**
Please contact your local Australia or New Zealand Embassy or Consulate to check details, or ask your *CE* coordinator. Please note that any visa fees are the responsibility of the applicant. And, while we can assist you during the process, ultimately it is your responsibility to ensure that you have obtained the appropriate visa for your work experience. *Cultural Embrace* has no control over the visa process and cannot guarantee that your visa application will be accepted.
- ✓ **Arrival Pick-Up and Orientation**
Volunteers arriving on Friday mornings will be picked-up and transferred to the local volunteer office for an orientation. Training about the local community, communities, project duties, and lifestyle will be provided by your experienced Team Leader.
- ✓ **Volunteer Materials**
Volunteer t-shirt and/or guidebook will be provided on site.
- ✓ **Project Transportation**
Transportation to and from volunteer sites is included throughout the program.

Discover the *Similarities*...Share the *Differences*...

♦ Cultural Embrace ♦ 7201 Bill Hughes Road Austin, Texas 78745 USA ♦ Phone: 512-469-9089 ♦
♦ Skype: Cultural.Embrace ♦ info@culturalembrace.com ♦ www.culturalembrace.com ♦

PROGRAM DETAILS & FAQs CONTINUED

- ✓ **International Traveler's Insurance with Basic Major Medical Coverage**
Our policy provides basic medical coverage. Additional policies and premium plans are available at extra cost.
- ✓ **Cultural Embrace "Culture Kit"**
Before your departure, we will send you a cultural kit that is filled with useful tips, advice, information, and your insurance card to prepare you for your amazing adventure of living and working abroad.
- ✓ **Full-time Representation**
Cultural Embrace provides English-speaking representation in the United States and Australia/New Zealand prior to, during, and after your placement.



Requirements:

In order to participate in this volunteer program, *Cultural Embrace* requires that you:

- Be between the ages of 18 to 70. Or, if younger than 18, you must have parental or guardian consent
- Have good physical health
- Be open to foreign cultures and living abroad
- Have a high level of responsibility
- Be dedicated to the full term of commitment
- Be a team player
- Enjoy providing a service and working with others in a challenging environment

2011 Program Fees:

Location	1 week	Additional Week
Australia	US\$1340	US\$275
New Zealand	US\$1320	US\$265

**Prices listed in US Dollars*

***Please note- Prices are subject to change according to exchange rates..*

Discover the *Similarities*...Share the *Differences*...

♦ Cultural Embrace ♦ 7201 Bill Hughes Road Austin, Texas 78745 USA ♦ Phone: 512-469-9089 ♦
♦ Skype: Cultural.Embrace ♦ info@culturalembrace.com ♦ www.culturalembrace.com ♦

PROGRAM DETAILS & FAQs CONTINUED

Project Details:

- There are 6- 10 volunteers in each team arriving from all over the world. They include students, backpackers, families, retirees – anyone with an interest in undertaking voluntary conservation projects! Each team is led by an experienced Team Leader – they are trained in the safe management of projects, and are an enthusiastic expert in the practical conservation projects.
- Projects normally run for 5 days per week, with one or two days free per week to relax and sightsee.
- Project hours are from 8am–4pm daily, although this varies on some projects when required by seasonal conditions or project activities.
- Volunteers will travel to a different project location every week or two. This means that in a 6-week project, volunteers will generally visit at least 3 different project locations, and will usually undertake 2 or 3 different types of project activities. We incorporate as much variety into our program as possible, while achieving our essential conservation goals. We do not guarantee volunteers a choice of projects, as these vary according to seasonal conditions and conservation priorities. We do our best to ensure an assortment of projects or locations during each term.
- Volunteers should be prepared to live and work as a member of a team, including sharing accommodation and helping with domestic chores.
- Although good health and a positive attitude are essential, volunteers do not need any prior skills or experience, as we will provide all training required.

Projects Available:

Each placement will vary since there are so many different conservation projects across Australia and New Zealand. Projects include:

- Tree planting
- Erosion and salinity control
- Seed collection
- Construction and maintenance of walking tracks
- Endangered flora and fauna surveys
- Weed control
- Habitat restoration
- Heritage protection



Discover the *Similarities*...Share the *Differences*...

♦ Cultural Embrace ♦ 7201 Bill Hughes Road Austin, Texas 78745 USA ♦ Phone: 512-469-9089 ♦
♦ Skype: Cultural.Embrace ♦ info@culturalembrace.com ♦ www.culturalembrace.com ♦

PROGRAM DETAILS & FAQs CONTINUED

Sample projects taken on by past conservation volunteers:

- Reconstructing a walking trail up Cradle Mountain in Tasmania.
- Planting rainforest trees in the wet tropics of Queensland.
- Collecting seeds from native plants at Wilson's Promontory in Victoria.
- Putting in fox baits to protect native animals in the Flinders Range in South Australia.
- Planting native trees on one of the Sydney Harbor Islands in New South Wales.
- Building walking tracks at Uluru Kata Tjuta National Park, NT.
- Creating habitat corridors for the Cassowary at Mission Beach, QLD.
- Working in coastal conservation by installing fencing to protect coastal dunes in Waterhouse Conservation Area, TAS.



How to Apply:

1. Obtain the **Volunteer Abroad Application Forms & Procedures** documents in one of two ways:
 - (a) Download the forms from our website at www.culturalembrace.com
 - (b) Call *Cultural Embrace* at 1-512-469-9089 or Skype: Cultural.Embrace to have the forms mailed to you within 3-4 days.
2. Read the instructions carefully and *complete all forms*.
3. Submit your completed application packet to:

Cultural Embrace
7201 Bill Hughes Road
Austin, TX 78745 USA



Discover the *Similarities*...Share the *Differences*...

♦ Cultural Embrace ♦ 7201 Bill Hughes Road Austin, Texas 78745 USA ♦ Phone: 512-469-9089 ♦
♦ Skype: Cultural.Embrace ♦ info@culturalembrace.com ♦ www.culturalembrace.com ♦

PROGRAM DETAILS & FAQs CONTINUED

Completed packets should include the following:

- Volunteer Program Application
- Signed Volunteer Agreement
- Copy of your passport (information page only)
- Cover Letter in English explaining why you want to Volunteer in Australia/New Zealand
- Two References: preferably professional and/or character references
- Doctor's note verifying that you are in excellent mental and physical health
- Copy of Police Clearance (obtainable from your community's local police station)
- Two 1½" x 2" official passport-size photos, with your name printed on each photo
- One smiling full-length photo of yourself (for local coordinator to identify you)
- US\$250 non-refundable deposit (credited towards your program fee)



Upon receipt of your application, a *Cultural Embrace* coordinator will contact you for a 20-30 minute phone interview. Once we accept you in to our program, you will receive an invoice for the remainder of your program fee. In order for us to contact our local partners to start your placement process, we require at least 50% of your program costs.

We recommend submitting your application and program fee at least 3-4 months prior to your desired start date in order for us to organize and arrange your volunteer placement.

**Cultural Embrace* requires an expedited application fee for those applying 16 weeks or less before the desired date of departure. Applications received 12-16 weeks prior to desired departure date will be charged \$150. Applications received fewer than 12 weeks before the desired departure date will be charged \$250.

Frequently Asked Questions:

1) *Why should I pay to volunteer abroad, and where does my money go to with Cultural Embrace?*

Cultural Embrace and our local partners in Oceania specialize in arranging a guaranteed volunteer placement, housing and insurance prior to your departure. This will alleviate the troubles and stress of getting everything organized in a new country, so you will have more time and energy to spend on your volunteer project and living abroad. Your time abroad will still be an independent and memorable one, but we are here to guide you to a safe, healthy and comfortable experience before, during, and after your adventure.

Discover the *Similarities*...Share the *Differences*...

♦ **Cultural Embrace** ♦ 7201 Bill Hughes Road Austin, Texas 78745 USA ♦ Phone: 512-469-9089 ♦
♦ Skype: Cultural.Embrace ♦ info@culturalembrace.com ♦ www.culturalembrace.com ♦

PROGRAM DETAILS & FAQs CONTINUED

You will be assigned an experienced Program Coordinator from our Austin, Texas office. He/She will provide personalized attention to help pre-arrange your volunteer placement, housing and travel needs. Our Program Coordinator will work with our in-country representative to match your requests and background skills with the availability and needs of the local employer. Once you go abroad, you will be assisted by our in-country representative, and will typically have a direct supervisor for your project, as well.

Your program fee includes your customized volunteer placement, housing and meals, airport transfer, orientation, basic international traveler's insurance, and all of the administrative and logistical costs to set up your placement in the States and Oceania. **Cultural Embrace** also pro-rates the expenses for marketing, advertising, and site visits/communication among all of our programs within our fees.

2) *What are the living conditions like?*

Accommodations vary with each project and location. Typical housing includes caravans, hostels, shearers' quarters, bunk-houses, and camping (tents supplied). You should bring a sleeping bag and mat. Upon arrival, you will also have a 2-nights Jet Lag Recovery starter package included, where you will share a 4-person dorm room.



3) *What type of meals are included?*

All food during the volunteer project is provided. For breakfast, cereal, bread, toast, tea, and coffee are supplied. Lunch is typically a self-made sandwich and fruit, and in the evening a meal is prepared by the whole group. Volunteers help with the preparation of meals and cleaning up of dishes, plus some domestic duties are required. We rely on every volunteer to participate fully in the program, and the evening meal is a popular part of the day. We can cater for vegetarians, but if you have very specific dietary requirements (or food allergies), you may need to provide your own food. Please advise any special dietary requirement on your application.

4) *What is the application process like, and when will I have confirmation about my volunteer project?*

After C.E. receives your completed application, you will be assigned a personal Program Coordinator who will work with you through your departure and beyond. He/She will conduct ~30 phone/web interview (or in person, if applicable) to discuss your background, goals, and expectations of a volunteer placement. Then, you will receive an invoice for the remainder of the program, and once we receive at least half of this fee, we will send your details to Oceania to find available projects that match your interests. Some companies may want to conduct a phone interview with you, which your Program Coordinator will prepare you accordingly. Placements are confirmed prior to departure with both volunteers and project managers agreeing on the terms, duties, responsibilities, and schedule.

Discover the ***Similarities...*** Share the ***Differences...***

♦ Cultural Embrace ♦ 7201 Bill Hughes Road Austin, Texas 78745 USA ♦ Phone: 512-469-9089 ♦
♦ Skype: Cultural.Embrace ♦ info@culturalembrace.com ♦ www.culturalembrace.com ♦

PROGRAM DETAILS & FAQs CONTINUED

5) *How long can I volunteer in Oceania?*

The minimum duration is one week, and you may stay up to six months. The typical project length is five days, meaning that you will have the option of moving to a new location and project every week, allowing you the chance to explore multiple areas and learn about a range of community initiatives.

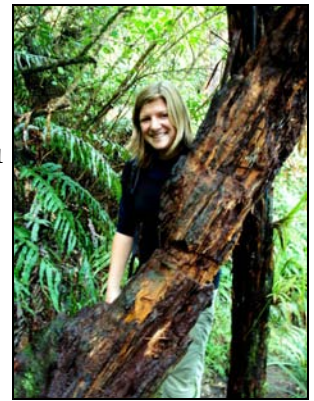
6) *What type of visa assistance does **Cultural Embrace** provide?*

Participants going to Oceania for three months or less will travel on a tourist visa good for up to 90 days. If you are planning to stay longer than 3 months, you will have to apply for an extension of your tourist visa. Please visit http://www.immi.gov.au/e_visa/e676.htm (Australia) or <http://www.immigration.govt.nz/migrant/stream/visit/visitors/process/default.htm> (New Zealand) for information about how to qualify and apply for the tourist visa.

Please note that any visa fees are the responsibility of the applicant. And, while we try to assist you during the process, ultimately it is your responsibility to ensure that you have obtained the appropriate visa for your volunteer experience. *Cultural Embrace* has no control over the visa process and cannot guarantee that your visa application will be accepted.

7) *What should I wear and bring to Oceania?*

Depending on the time of year and location of your placement, you will need to dress accordingly. Since space is limited at volunteer sites, we ask that you keep your luggage to a maximum of 15kg. We strongly recommend safety work boots with protective toe caps, and clothes that are loose and comfortable that will also fight out the harsh sun rays, and sunscreen. However, we will provide you with more details in your *Cultural Embrace* pre-departure kit about your job and packing list.



8) *Can I volunteer and/or live with a friend or partner?*

Yes, you can enroll in this program with other people, however, please note that positions may be limited within a company. Additionally, we encourage you to travel and explore your world with others. This enhances your experience and memories, and you can be rewarded for referring others to travel on a CE program.

9) *How long will it take to make my placement?*

We ask applicants to apply at least 3-4 months in advanced of your desired start date. The placement may take less time than this, but we want to ensure that we have enough time to find a great placement for you! There are additional administrative fees if you apply less than 3 months in advanced, and we do not contact our local partners until we receive at least 50% of the program fee payment.

Discover the *Similarities*...Share the *Differences*...

♦ Cultural Embrace ♦ 7201 Bill Hughes Road Austin, Texas 78745 USA ♦ Phone: 512-469-9089 ♦
♦ Skype: Cultural.Embrace ♦ info@culturalembrace.com ♦ www.culturalembrace.com ♦

PROGRAM DETAILS & FAQs CONTINUED

10) *When should I buy my plane ticket and does Cultural Embrace provide any resources to help with plane tickets?*

Plane tickets should not be purchased until after your placement has been confirmed. *Cultural Embrace* works with consolidators and discount travel agencies that can help find cheaper tickets than those that are available to the general public. We have a partnership with STA Travel (1-877-236-1048) for great student/youth rates, and they have a very nominal service fee if you need to make any changes before or during your travels.



11) *What do I do if I have a problem or complaint within my volunteer placement?*

You should first speak with your project supervisor or manager to give them an opportunity to explain or investigate the situation. If the complaint still exists, then please contact your local representative in Oceania, as well as let *Cultural Embrace* (Austin office) know so we may diplomatically mediate on your behalf. Please note that you will be assigned an in-country representative that will assist you with any questions or concerns. We also encourage you to fill out our program evaluations.

12) *Is there someone I may speak to about their experience on this program, and being abroad?*

Yes, we have a network of current and past travelers that are happy to communicate with you. Due to confidentiality, please contact our Austin office to receive a list of names and contact information of participants and alumni that have agreed to be contacted by others. Additionally, we encourage you to check out, use, and get involved with our social media community. These community sites will provide great insight of what you should expect on your adventure abroad. Plus, we provide additional discounts to our community members!

Facebook Page (<http://www.facebook.com/CulturalEmbraceTravel>)

Youtube (<http://www.youtube.com/user/CulturalEmbrace1>)

Twitter (<http://twitter.com/culturalembrace>)

Blogger (<http://www.culturalembrace.blogspot.com/>)



Discover the *Similarities*...Share the *Differences*...

♦ Cultural Embrace ♦ 7201 Bill Hughes Road Austin, Texas 78745 USA ♦ Phone: 512-469-9089 ♦
♦ Skype: Cultural.Embrace ♦ info@culturalembrace.com ♦ www.culturalembrace.com ♦

PROGRAM DETAILS & FAQs CONTINUED

A Few Words. . .

At *Cultural Embrace*, we want to facilitate experiences that, first and foremost, help individuals have a safe and healthy time abroad while becoming better acquainted with both themselves and the richly textured cultures of the world around them. Our partnerships with companies, non-profits, and NGOs grant program participants the opportunity to explore Oceania first-hand while adding valuable content to their resumes. Volunteering in Oceania is, putting it shortly, a tremendously edifying experience that is sure to leave you with lasting memories and a renewed sense of purpose. So do yourself a favor: call *Cultural Embrace* straight away and let us start planning your once-in-a-lifetime international adventure!

For any questions, please do not hesitate to contact us at info@culturalembrace.com or by phone at 1-512-469-9089 or by Skype: Cultural.Embrace.



Discover the *Similarities*...Share the *Differences*...

♦ Cultural Embrace ♦ 7201 Bill Hughes Road Austin, Texas 78745 USA ♦ Phone: 512-469-9089 ♦
♦ Skype: Cultural.Embrace ♦ info@culturalembrace.com ♦ www.culturalembrace.com ♦