



СМОЛЬНЫЙ ИНСТИТУТ  
свободных искусств и наук

Smolny College  
of Liberal Arts & Sciences

St. Petersburg, Russia

Russia's first liberal arts college

[www.smolny.org](http://www.smolny.org)

Smolny

Санкт-Петербургский  
государственный университет  
Bard College

Институт  
свободных  
искусств и наук

## AN INVITATION TO STUDY IN RUSSIA

Dear student:

If you choose to study at Smolny College, you will have an experience that is unparalleled among study abroad programs. In addition to excellent Russian language instruction, you will take classes on other subjects together with Russian students at Russia's first liberal arts college. Some courses are taught in English, but most—everything from Art and Architecture, to Film, History, Literature, Music, Philosophy, Complex Systems, and many more—will be in Russian.

The majority of Smolny's students and faculty are Russian; others come from the former Soviet Union, Central Asia, Europe, and the United States, among other places. These students came to Smolny because they want small classes and personal attention. They want to be part of Russia's first liberal arts college—an institution that is open, multidisciplinary, and international. For all of these reasons, the Smolny community warmly welcomes visiting international students.

We are especially proud of Smolny's Russian as a Second Language (RSL) program. North American students take a special two-week language intensive course prior to their first semester and continue intensive language training throughout their time at Smolny.<sup>1</sup> Our language instructors have extensive experience teaching American students and are familiar with American teaching methods. In addition, you will be improving your Russian every day as you share ideas and experiences with Smolny faculty and your fellow students.

Bard and Smolny also offer a summer language intensive, which you may find useful to your language preparation.

The following pages will give you a more complete idea of what Smolny does, who we are, and what we aspire to be. Additional information is available through our website, or from Bard College's Institute for International Liberal Education (IILE). We hope that you will come to study with us, and we look forward to welcoming you to Smolny College.

Cordially,  
Nikolay Koposov, Ph.D.  
Dean of Smolny College  
Professor of History, Smolny College



<sup>1</sup> Students whose first language is Russian may opt out of the RSL Program after evaluation by the program director.





### Which North American Students Will Gain the Most from Smolny?

Study at Smolny is not only for Russian majors. Students with intermediate-high and advanced Russian language proficiency and an interest in Russian area studies will benefit greatly from taking courses in Russian at Smolny. If your primary interest is in Art, History, Film, Music, Sociology, Political Science, Literature, or another related field, you will find many opportunities at Smolny.

### SMOLNY COLLEGE STUDENTS ARE A DIVERSE GROUP

North American students who spend a year or semester studying at Smolny College come from a wide range of disciplines. Their home institutions include small liberal arts colleges and large state universities. About half are Russian Studies majors; others have interests in History, Music, Political Studies, International Relations, Art History, or Sociology, among other fields. Most North American students have between two and three years of college-level Russian. Many stay at Smolny for an academic year, but one semester of study is also available.

Russian students who enroll in Smolny College are also a diverse and motivated group. They are attracted to the intellectual possibilities that a liberal arts education provides and appreciate the freedom to create their own program at Smolny. They enjoy Smolny's multidisciplinary approach and the opportunity to get to know their professors. The possibility of earning a dual degree—from Bard and from St. Petersburg State University—is also very attractive to Russian students.

In addition to students from the St. Petersburg area, young Russians come to Smolny from Murmansk, Moscow, Novgorod, Sakhalin, Surgut, and many other Russian cities and towns. In fact, more than 65% of the student body is from outside the St. Petersburg region—an unusual statistic at a Russian state institution. There are also students from Belarus, Estonia, Georgia, Kazakhstan, Kyrgyzstan, Moldova, Turkmenistan, Ukraine, and Uzbekistan.

### HERITAGE SPEAKERS AT SMOLNY

Heritage speakers, or those students who have a fluent or near-fluent level of Russian through exposure at a young age, often find the Bard-Smolny program to be an attractive study abroad option. Heritage speakers frequently test out of the Russian language coursework requirement, but may choose to take a Russian language course specifically designed for heritage speakers, in addition to a full course load of classes in the social sciences and humanities, in Russian. Heritage speakers often choose this unique opportunity as a way to improve their academic and professional knowledge of the Russian language.





## ABOUT SMOLNY COLLEGE

### The Smolny Campus

Smolny College is currently housed in two buildings of St. Petersburg State University. It is an urban campus, less than a mile from the famed State Hermitage Museum and close to all of the city's most important resources. The two buildings currently in use are a 15-minute walk apart. In the 2008-2009 academic year, most of Smolny's classrooms and administrative offices will be housed in the newly renovated wings of the Bobrinskiy Palace (pictured); by fall 2009 Smolny will complete its move to this fully renovated and restored historic mansion.

Smolny College is a joint enterprise of Bard College and St. Petersburg State University and is Russia's first liberal arts college. Founded in 1997, it is a young college created by two institutions that have long and venerable histories. Smolny College seeks to contribute to the democratization of Russian higher education and, in doing so, to serve as a model for a new kind of international education.

The student body currently numbers approximately 450. Smolny has a diverse, highly trained faculty. Most classes are small seminars. Students enjoy individualized instruction and the opportunity to work closely with professors.

Smolny College is unique in offering young Russians—as well as exchange students from around the world—an opportunity to construct their own curriculum. Smolny students are encouraged to develop their minds freely, to think critically, and to love the arts. They choose their courses and majors from among 12 major and eight minor programs encompassing a wide variety of disciplines in the arts and humanities. Students are expected to develop broad knowledge along with specific skills in research and expression. All students, including visiting international students, have individual faculty advisors.

## A BRIEF HISTORY

In the 1980s, a group of creative young academics from St. Petersburg State University met faculty from Bard College who were conducting an exchange program. The Russian scholars' interest in reforming the social sciences and

humanities coincided with Bard's interest in curricular innovation and new forms of international education. Together, the two groups developed a proposal for the establishment of a liberal arts college within the University.

In 2000, Smolny College received accreditation from the Russian Ministry of Education as an experimental B.A. program within St. Petersburg State University. In 2005, it was awarded full accreditation. Bard also agreed to give its B.A. degree to Smolny students who successfully complete the four-year curriculum. Thus, Smolny graduates earn two degrees at once: a B.A. in Liberal Arts and Sciences from Bard College and a B.A. in Arts and Humanities from St. Petersburg State University. The first Smolny students graduated in June 2003.

Formally, Smolny is part of St. Petersburg State University, which was founded in 1724 and is one of Russia's leading institutions of higher learning. Smolny's affiliation with the University allows visiting students access to university grounds and libraries.

## SMOLNY COLLEGE'S HISTORIC LOCATION

Known as the "Venice of the North" because of its many canals, St. Petersburg is Russia's historic gateway to the West and is one of Europe's most beautiful cities. It offers a great variety of museums, theaters, music, performances, and other sport and cultural events.

As in the early years of the 20th century, St. Petersburg is again becoming a center for Russia's new alternative culture including theater, pop music, poetry, literature, classical and experimental dance, and the visual arts.



## How is the Bard-Smolny Program Different from other Study Abroad Programs?

Smolny is the only college in Russia to offer visiting students a broad range of liberal arts courses, along with an eight-credit Russian as a Second Language program. Strictly speaking, Smolny is not a "study abroad program." It is a four-year college with a full and rich curriculum. Smolny's unique character allows students from North America to be immersed in classes with Russian students and to take academic courses that meet requirements for the B.A. degree at their home college or university.



## SMOLNY COLLEGE'S CURRICULUM

The Smolny liberal arts curriculum is based upon the following principles:

- The freedom of students to determine their own courses and majors
- A combination of educational breadth, as well as depth in an area of concentration
- A combination of the study of theoretical disciplines with the acquisition of practical life skills
- Small class size (usually not more than 15-20 students) with primary attention paid to independent reading and critical discussion of texts.

Smolny College has 12 academic programs (majors) and eight areas of concentration (minors), offering over 130 courses each semester. While a sampling of courses is in English (5-7 each semester), the majority of courses are in Russian.

### ACADEMIC PROGRAMS (MAJORS)

Art and Architecture  
Cognitive Studies  
Complex Systems in Nature and Society  
Economics  
Foreign Languages (Arabic, English, French and German)  
History of Civilizations  
Literature  
Music  
Performing Arts (Theater, Film)  
Philosophy  
International Relations, Political Science, and Human Rights  
Sociology and Anthropology

### AREAS OF CONCENTRATION (MINORS)

American Culture and Civilization  
Computer Science  
Eastern Culture and Civilization  
French Culture and Civilization  
Gender Studies  
Human Rights  
Religious Studies  
Russian Culture and Civilization

“A professor at my home university suggested that as a heritage Russian speaker I apply for the Bard-Smolny program abroad for my time in Russia. I am very glad that I made this choice. The classes are difficult but extremely rewarding. I take an RSL course specifically catered to heritage speakers and the remainder of my courses are with Russian students.”

– Natalya Bogopolskaya,  
Claremont McKenna College



## ACADEMIC EXPECTATIONS FOR NORTH AMERICAN STUDENTS STUDYING AT SMOLNY COLLEGE

At Smolny, the advising system plays a very important role in creating each student's individual curriculum. Every student, including international students, is provided with an advisor from among Smolny's faculty. The Associate Dean of International Students typically acts as the advisor for international students, but you may also request to have an advisor from a particular academic field. Students meet with their advisor prior to the start of the semester for course selection and regularly thereafter.

While at Smolny, students typically take between 12 and 18 credits each semester, eight of which are normally in the Russian as a Second Language program. (Heritage and other high proficiency speakers may sometimes have this requirement reduced or waived.) You will choose a mixture of classes taught in Russian and English, with the help of your academic advisor.

### A SOLID FOUNDATION OF RUSSIAN IS NECESSARY

North American students who are accepted for study at Smolny College arrive with varying levels of proficiency in Russian. At a minimum, you should have successfully completed two full years of college-level Russian and be at an intermediate language level. In addition, a summer immersion program is strongly recommended before you begin your study at Smolny. Students undergo a preliminary Russian assessment at the time of application in order to help the selection committee determine their ability to participate in, adjust to, and excel at Smolny.

Students with the minimum required intermediate-mid Russian proficiency will often take most of their non-RSL coursework in English, while auditing Russian-language academic courses. Other students will take one academic course in Russian and one in English during their first semester. Students with three years of college-level Russian and who test at an advanced proficiency level are usually able to take two or more courses in Russian in addition to the eight-credit RSL program. Smolny's Associate Dean of International Students and the RSL faculty will help you to design a program that works ideally for your Russian language level.

Those students who opt to spend the entire academic year at Smolny often report that their second semester is especially rewarding, as their Russian language has reached a level that enables them take a full academic course load in Russian. Such students have the freedom to choose almost any academic course offered, and often conduct independent research in Russian.

## SAMPLE COURSE PLANS

In addition to the RSL program, North American students choose from among Smolny's course offerings, finding a balance of courses that reflect their academic interests, while engaging in intensive Russian language study. The majority of courses offered at Smolny are in Russian. Students taking courses in Russian for credit can expect to read 100-200 pages per week in Russian for each class, to contribute to class discussion in Russian, and to write academic papers in Russian. With this in mind, you should plan a realistic course load for your first semester at Smolny.

Here are actual semester course plans of North American students who recently studied at Smolny. All classes are in Russian unless otherwise indicated. Please note that beginning in the 2008-2009 academic year, most regular Smolny courses will carry three credits. This will not apply to RSL classes.

### Angela is a Comparative Literature major who arrived at Smolny at the intermediate-mid language level.

Russian.301: Conversational Practice and Essay Writing	4 credits
Russian. 303: Grammar & Morphology	2 credits
Russian. 305: Language of Mass Media	2 credits
Performing Arts 200: Russian Classics on the World Screen	4 credits
Art History 400: Unofficial Soviet Art [in English]	4 credits
<b>Total Credits:</b>	<b>16</b>

### Martha is majoring in Anthropology and Slavic Studies and completed two years plus an intensive summer program before coming to Smolny.

Russian 401: Conversational Practice and Essay Writing	2 credits
Russian 405: Grammar: Practical Syntax	2 credits
Russian 409: Analytical Reading	2 credits
Russian 411: Language of Mass Media	2 credits
Sociology 200: Sociology of Deviant Behavior: The Gender Studies Approach	4 credits
Art & Art History 111: Introduction to Printmaking	4 credits
<b>Total Credits:</b>	<b>16</b>

### Bryan is a Humanities major and came to Smolny after completing three years of college-level Russian language.

Russian 401: Conversational Practice and Essay Writing	2 credits
Russian 403: Grammar: Difficult Topics	2 credits
Russian 409: Analytical Reading	2 credits
Russian 411: Language of Mass Media	2 credits
Anthropology 300: What is the Enlightenment? "Art of Life", Literature and the Birth of Public Politics in the First Third of the 19th Century in Russia	2 credits
Literature 300: The Russian Classic Novel	4 credits
History 301: History of the Russian Empire	4 credits
<b>Total Credits:</b>	<b>18</b>



## Are there courses in English?

Russian is the principal language of instruction; however, each semester a small number of courses are taught in English. Some North American students find that they can meet their needs best by combining Russian as a Second Language (typically eight credits) with a course taught in Russian and a course taught in English. Smolny also offers practicing art courses in music, art, video and photography, which place less emphasis on reading and writing.

## How do I know that I am at an Intermediate-Mid Language Level?

In general, students who study at Smolny must enter with a minimum proficiency of intermediate-mid, as measured on the ACTFL (American Council of Teachers of Foreign Languages) scale. The ACTFL scale was developed by US language professionals to measure proficiency in a specific language. Your Russian teacher should be familiar with the ACTFL scale and can give you a good idea about where you place on the scale.





“Smolny is the best way, maybe even the only way, for American students abroad to both learn Russian and study the subjects that inspired them to take up the difficult language in the first place.”

– Emily Wang  
Wesleyan University

## RUSSIAN AS A SECOND LANGUAGE PROGRAM

The main objective of the Russian as a Second Language (RSL) program is to boost and balance the development of students’ listening comprehension, speaking, reading, and writing skills, while facilitating their adjustment to everyday life in Russia and to the Smolny academic environment.

The RSL program typically awards eight academic credits. In addition to the semester program, a two-week Russian Language Intensive is provided prior to the beginning of the first semester at Smolny. This two-week course offers 20 academic hours of language instruction per week, and has the dual focus of improving students’ conversational skills and preparing them for exposure to academic Russian.

During the semester, the RSL course of study includes such components as grammar, conversation and composition, language of mass media, lexicon and word formation, and phonetics (the latter being offered not for credit). The specific courses will vary depending on students’ language skills.

Here are several examples of RSL programs from recent semesters. All components are worth two credits unless otherwise specified.

**Lee came to Smolny with two years of Russian plus an intensive summer program. Her RSL program included:**

- Conversation and Composition: Dialogue of Cultures
- Grammar: Difficult Topics
- Lexicon and Word Formation
- Language of Mass Media
- Phonetics and Intonation.

**Vince had two years of college-level Russian before coming to Smolny. His RSL program included:**

- Grammar (4 credits)
- Conversation and Composition: Speaking Russian
- Language of Mass Media
- Phonetics and Intonation.

Smolny’s RSL faculty members are expert in working with international students. Most North American students find that the teaching style is a blend of the grammar-based methods common in Europe and the former Soviet Union and the more communicative methods popular in the United States.

RSL at Smolny is designed to link with the academic courses that individual students take. In addition to classroom instruction in RSL, all instructors hold regular sessions for individual consultations in academic reading and writing. You are encouraged to use these individual meetings to receive help with reading and writing assignments for your academic courses. Smolny students working as Russian tutors are also available to help you with your language questions and editing of your papers.

Heritage speakers of Russian may also find components of the RSL program to be beneficial. The RSL team is happy to help heritage speakers choose the best mixture of Russian language and other Smolny courses.

“The Russian language professors are always glad to answer any questions you might have about the language. Come to class a few minutes early and chat with them.”

–Jordan Shedlock,  
Hamilton College



## CORE RSL FACULTY

All faculty members of the Russian as a Second Language program have extensive experience teaching Russian as a second language to American students. Below are key members of the Smolny RSL department.

**Shchepina, Elena**, Ph.D. in Philology, Herzen State Pedagogical University. RSL Program Director and Associate Professor, Smolny College. Lead Teacher for Advanced Russian II at the Middlebury Russian Summer School since 2001. Has taught at Oakland University (Michigan), the University of Michigan, and the Norwich University summer Russian School.

**Kozhevnikova, Ludmila**, Ph.D. in Philology, Herzen State Pedagogical University. Associate Professor, Smolny College. Has worked with American students for 15 years and is the author of more than 30 academic publications and several textbooks.

**Stepanova, Svetlana**, Ph.D. in Philology, St. Petersburg State University. Associate Professor, Smolny College; Senior Research Assistant, Phonetics Department, St. Petersburg State University. Has taught in the undergraduate and graduate programs at the Middlebury Russian Summer School since 2002. Has taught in the Norwich University summer Russian School.



### What if I Need Extra Help with My Academic Classes Taught In Russian?

The RSL program faculty recognize that students will have questions about coursework taught in Russian. All instructors hold regular sessions for individual consultations in academic reading and writing. Smolny students who serve as Russian tutors are available to help you with similar concerns.

## THE BARD-SMOLNY SUMMER LANGUAGE INTENSIVE

We highly recommend that students participate in a summer language program before entering Smolny. There are many summer programs to choose from, in Russia and in the United States.



The Bard-Smolny Summer Language Intensive is designed for those who want to have an immersion experience after having completed between two and six semesters of college-level Russian language. Both four- and eight-week programs are offered. They emphasize grammar, vocabulary acquisition, and conversational practice, with weekly thematic components taught in Russian. Past thematic components have included Russian Politics, Literature, and Art History. A total of 22 hours of instruction are offered weekly.

As a student in the Bard-Smolny Summer Language Program, you will be asked to take a pledge to speak only Russian while in the Smolny buildings or participating in cultural activities. Highlights of the extensive cultural program include visits to St. Petersburg's incomparable museums, concerts, architectural monuments, and environs as well as an overnight trip to an historic town in northwestern Russia.

Students coming to Smolny are encouraged to enroll in the eight-week course, which allows for a two-week break before the beginning of the Fall Semester.

**Program dates and fees for Summer 2009 will be announced in November 2008. . Please check the website [www.smolny.org](http://www.smolny.org) for details.**



## CULTURAL PROGRAM AND ORIENTATION FOR STUDY AT SMOLNY COLLEGE

Bard provides a comprehensive orientation prior to your study at Smolny. The program will begin with pre-departure training at Bard College in upstate New York, from where you will fly with Bard-Smolny staff to St. Petersburg. The St. Petersburg orientation includes an overview of program expectations (academic and behavioral), safety and health information, a discussion of cultural adjustment strategies, an introduction to life in St. Petersburg, and visa registration. On the final day of orientation, you will move into your semester housing. Following the orientation program, you will begin the two-week Russian Language Intensive at Smolny.

The academic program at Smolny is accompanied by a cultural program, which introduces students to Russian history and culture. The program begins during the Russian intensive, with an orientation to the city. Excursions will include walking tours, visits to museums, and an introduction dinner with Smolny classmates.

The cultural program continues throughout the semester, with an average of one excursion every two weeks to an area museum, opera, ballet, theater, or palace; social activities including bowling and dinners; and several weekend excursions outside Petersburg. All events are conducted in Russian, and Smolny classmates are invited along on excursions.

## LIVING IN ST. PETERSBURG

During your first semester at Smolny, you will have the option of living either in a St. Petersburg State University dormitory or with a host family.

Living in the university dormitory will help to introduce you to student life in Russia and may make assimilation into the Smolny study body an easier process, since the dormitory is also home to a number of four-year Smolny students. In fact, if you choose to live in the dormitory, you will share a suite with a mixture of other program participants and Smolny students. Each suite has its own bathroom and kitchenette, with linen and cleaning services provided. In addition, laundry facilities, cafes, lounges and gyms are available in the dormitory. It is easily accessible to Smolny's campus, as well as the city center, via public transportation.

### Will I have the opportunity to travel outside of St. Petersburg?

An extensive and carefully planned cultural program is an integral part of North American students' time at Smolny College. The cost of the cultural program is covered by program tuition fees. You will visit many attractions within the city of St. Petersburg, including St. Isaac's Cathedral and the Russian Museum, and will attend performances such as the ballet *Swan Lake* at the Mariinskiy Theater. Trips outside of the city may include the imperial palaces at Peterhof, the medieval city of Novgorod, and Russia's capital, Moscow.



“One of the best things about the Smolny program is the ability to meet Russian speakers. In St. Petersburg I made one of the best friends I have ever had, Gayar. He not only helped me with my Russian and taught me a lot of slang, but also made speaking a joking, fun affair, rather than an exercise to be fulfilled in class. Russians often say that Pushkin is ‘Наше всё’ - our everything. Well here at Smolny Gayar is ‘Наше всё.’”

—Richard Gray, Williams College

Living with a Russian family will also provide opportunities for immersion in a Russian cultural and linguistic environment. Home-stays often foster language acquisition and provide a support network outside the University.

During their second semester, with permission of the Program Manager, all students have the option of finding independent accommodation. Please refer to our website for more information on housing options: [www.smolny.org](http://www.smolny.org).

### STUDENT LIFE AT SMOLNY

Student life is an important and growing part of Smolny as a liberal arts institution. Smolny does not have a residential campus, and there are fewer established student organizations than on most American campuses. Nonetheless, students are encouraged to think big and create organizations to fit their interests and needs. Among the student clubs and initiatives at Smolny in recent years are: intramural soccer; KVN (a sketch comedy team that represents Smolny in competitions against other institutions); a Safe Sex Club; a discussion group on globalization; a gay and lesbian alliance (started by a U.S. student); a human rights awareness group; a film club; and *SmArt* a student art and literary journal founded by Russian and North American students.

Smolny also has a student-run Social Committee, which organizes student get-togethers and parties throughout the semester. In 2007-2008 the committee hosted a fall party, a New Year’s Eve party, a spring picnic, and end-of-semester events.

Smolny College has its own newspaper, *Abzats*, to which students are encouraged to contribute. Students are always invited to participate in the numerous lectures, seminars, and conferences that take place at Smolny College. Many students worked at and attended the first-ever Russian international conference on “HIV/AIDS and Human Rights,” hosted by Smolny in October 2005.

### ARTISTIC LIFE

North American students are encouraged to explore creative channels; many become involved in various special projects. Students have participated in Smolny’s theater program and have performed in various productions including a theatrical interpretation of Andre Bely’s *Petersburg*. Art

students have set up installations at Smolny. An American Studio Arts major concluded a year-long printmaking course with her own weeklong exhibition at a gallery in “Pushkinskaya 10,” St. Petersburg’s renowned art center dedicated to non-conformist art.

You are also welcome to pursue your musical interests at Smolny. Piano and voice lessons as well as lessons in electronic music are typically offered for credit, along with a number of classes on music history. In addition, Smolny’s faculty has contacts in the St. Petersburg music community and may refer students to outside musicians for private lessons. While private lessons cannot be granted formal credit through the Bard-Smolny program, students have found that the Smolny community affords many opportunities for recitals, concerts, and musical enrichment.

### COMMUNITY SERVICE

Volunteer service is encouraged and is supported by the program staff. Students have recently volunteered at Dom Miloserdyya (House of Mercy), a social rehabilitation center for children up to 18 years of age. Smolny students go to the center every week to play with the children, help them with their homework, and take them for walks in the neighborhood. Students with an interest in human rights have volunteered at the Humanitarian Action Fund, a non-governmental organization working to prevent the spread of HIV/AIDS.

There are many other volunteering opportunities available in St. Petersburg. Interested students should speak to a program administrator.

### INTERNSHIPS

Faculty and staff at Smolny have a wealth of contacts in the NGO, artistic, and media worlds. Students have found internships at places including the *St. Petersburg Times*, an English-language newspaper; the State Hermitage Museum; and Memorial, a Russian NGO focusing on human rights in Russia and the former Soviet Union. If you are interested in pursuing an internship, you should begin speaking with program administrators and Smolny faculty and staff early in the program. No course credit is given for internships.

Opportunities for structured academic research can also be arranged. St. Petersburg is home to numerous museums, galleries, academic institutions, archives, and libraries – most notably the Russian National

“I’ve studied abroad and traveled a lot of places, but I always am thinking of ways to get back to Russia; there is just too much to do, see, and acquire there in a lifetime. I’ve got a lot of nice pictures from abroad, but from Russia I came back with new perspectives, a cool language ability, and some of the best stories.”

— Jeff Kerby,  
University of Richmond





### What are Russian Smolny Alumni up to?

Over 300 students have received dual degrees from St. Petersburg State University and Bard College since Smolny graduated its first class in 2003. One third of Smolny alumni have enrolled in graduate study in Russia or abroad. Others work at non-governmental organizations in St. Petersburg, as journalists in local media outlets, and as artists in local performing arts theaters.

Library. Many students use these resources to research topics for and begin work on Senior Projects and theses; others choose to work on research for grants or for future graduate study. Smolny faculty are not only very knowledgeable in their fields, but also very well connected in St. Petersburg and are often able to provide students with unique access and research opportunities.

### ALUMNI OF THE BARD-SMOLNY PROGRAM

Many alumni of the Bard-Smolny program have made Russia part of their professional careers. After finishing their B.A. degree, students have gone on to graduate work in Russian Literature or Russian Studies, some of them at institutions in the Russian Federation. Several have won Fulbright awards to conduct research or teach in Russia; others have worked for American and Russian businesses or non-governmental organizations. One program alumnus worked for the Joseph Brodsky Estate in Massachusetts, cataloguing Brodsky's unpublished works. Alumni report that the language skills and cultural understanding acquired in the Bard-Smolny program were crucial to their later academic and professional success.

### PROGRAM STAFF

North American students at Smolny are supported by a network of responsible and highly professional individuals, both in Russia and in the United States.

The Bard College **Institute for International Liberal Education** is responsible for the overall administration of the Bard-Smolny program. Staff at the Institute will help you through the application, selection, and pre-departure processes, and will facilitate the transfer of Bard credit to your home institution.

Four program staff in St. Petersburg have primary responsibility for the well-being of North American students at Smolny. The Bard-Smolny **Program Manager** is a product of the American higher education system, with over five years experience living and working in Russia; the **Associate Program Manager** is a graduate of a Russian higher education institution, with experience residing and studying in the United States. The **Program Assistant** is a graduate of Smolny College. Together, this dynamic team helps students to integrate fully into St. Petersburg and student and academic life at Smolny.

The **Associate Dean of International Students** at Smolny College is responsible for overseeing North American students' academic experience. With a PhD from an American institution and ample teaching experience in both the US and Russia, the Associate Dean plays an important role in helping students create an academic program that is optimal for them, and acting as a liaison between students and the Smolny administration or faculty when necessary.

### Who teaches at Smolny?

The Smolny College faculty is composed of respected academics, writers, and artists. In fact, Smolny is known for having one of the best teaching staffs of all departments at St. Petersburg State University. This is because Smolny, as a liberal arts college with a multi-disciplinary curriculum, has been able to draw faculty from all departments as well as from other distinguished St. Petersburg institutions, such as the Academy of Fine Arts, the St. Petersburg Conservatory, and the European University. In addition, Smolny attracts young Russian faculty members who have earned their PhDs at American or Western European universities, and regularly hosts international scholars.





### The Virtual Campus

Each semester, teams of faculty at Bard and Smolny Colleges develop and co-teach courses under the auspices of the Virtual Campus. These dynamic courses include students in Annandale and St. Petersburg and utilize a combination of local classroom discussions, web-based teaching tools, and video-conferencing. Through the Virtual Campus, Bard and Smolny strive to use technology to overcome the obstacles of time and space, conduct open dialogue, and draw mutual benefit from their shared intellectual and cultural resources. All students studying at Smolny are welcome to participate in Virtual Campus courses.



### REGULAR FACULTY OF SMOLNY COLLEGE (Partial List)

**Akhapkin, Denis**, Ph.D. in Linguistics, St. Petersburg State University. Associate Professor, St. Petersburg State University; Researcher, Institute of Linguistic Studies, Russian Academy of Sciences; Head of Cognitive Studies Program, Smolny College

**Andrianov, Fedor**, Ph.D. in Mathematics, University of Chicago. Researcher, Steklov Mathematics Institute, Russian Academy of Sciences; Associate Professor, Head of Computer Science Program, Smolny College

**Astvatsaturov, Andrey**, Ph.D. in Philology, St. Petersburg State University. Associate Professor, St. Petersburg State University; Head of Literature Program, Smolny College

**Belkin, Anatoly**, artist and Editor-in-Chief, Veshch.doc. Senior Lecturer, Art and Architecture Program, Smolny College

**Boborykina, Tatyana**, Ph.D. in Philology, Herzen State Pedagogical University. Associate Professor, Herzen State Pedagogical University; Associate Professor, Literature Program, Smolny College

**Czeczot, Ivan**, Ph.D. in Art History, St. Petersburg State University. Head of the section of History and Theory of Fine Arts and Architecture, Russian Institute of Art History, Russian Academy of Sciences; Head of Art and Architecture Program, Smolny College

**Dragomoshchenko, Arkady**, poet, writer. Senior Lecturer, Literature Program, Smolny College

**Dubrovsky, Dmitrii**, Ph.D. in Ethnology, European University at St. Petersburg. Senior Researcher, Russian Ethnographic Museum; Associate Professor, International Relations, Political Science, and Human Rights Program, Smolny College

**Dvinyatin, Fyodor**, Ph.D. in Philology, St. Petersburg State University. Associate Professor, St. Petersburg State University; Head of Russian Culture and Civilization Program, Smolny College

**Fokin, Sergey**, Ph.D. in Philology, St. Petersburg State University. Professor and Chair of the Department of Romance Languages, St. Petersburg State University of Economics and Finances; Professor and Head of French Culture and Civilization Program, Smolny College

**Khapaeva, Dina**, Ph.D. in History, St. Petersburg State University. Associate Professor, History Program, Deputy Director for Research and Director of Smolny Collegium, Smolny College

**Khodorkovskaya, Elena**, Ph.D. in Musicology, Leningrad State Institute of Theater, Music and Cinema (now the St. Petersburg Theater Arts Academy). Associate Professor, St. Petersburg State University; Senior Researcher, Russian Institute of the History of Art, Russian Academy of Sciences; Head of Music Program, Smolny College

**Komissarov, Boris**, Ph.D. in History, St. Petersburg State University. Professor, St. Petersburg State University; Head of History of Civilizations Program, Smolny College

“At Smolny any preconceptions you may have had of Russia will be shattered, your worldview turned on its head. This is a result not only of the formal education that Smolny provides, but also of the freedom you are given (for better or worse) to ‘throw yourself to the lions,’ as it were, to come to some understanding of Russia that is arrived at by means other than the guided tour.”

— **Jesse Hadden, Reed College**

[WWW.SMOLNY.ORG](http://WWW.SMOLNY.ORG)





“At Smolny College I had the unique opportunity to do what I could not have done in the US: devote an entire academic year to the in-depth study of Russian literature and history in Russian, at once using and honing my language skills. ... Writing papers, listening to lectures, participating in seminars and thinking not only in Russian, but in the frame of different cultural ideas – all this gave me the impression of training with extra weights, of having accomplished something under unusual and difficult conditions. I am returning to my home institution with a solid understanding of my previous and future work.”

–Philipp Penka, Bard College

- Koposov, Nikolay**, Ph.D. in Philosophy and Ph.D. in History, St. Petersburg State University. Professor, History Program and Dean of the College, Smolny College
- Kouperin, Yurii**, Ph.D. in Physics and Mathematics, St. Petersburg State University. Professor, St. Petersburg State University; Head of Program in Complex Systems in Nature and Society, Smolny College
- Magun, Artemy**, Ph.D. in Philosophy, University of Michigan, Ann Arbor; Doctor of Philosophy, University of Strasbourg. Editor of newspaper “What is to be Done”; Associate Professor, Philosophy Program, Smolny College
- Markov, Boris**, Ph.D. in Philosophy, St. Petersburg State University. Professor and Head of the Philosophical Anthropology Department, St. Petersburg State University; Head of Philosophy Program, Smolny College
- Monakhov, Valery**, Ph.D. in History, Herzen State Pedagogical University. Associate Professor, History Program; Director of the College, Smolny College
- Morozov, Viacheslav**, Ph.D. in History, St. Petersburg State University. Associate Professor, St. Petersburg State University; Head of International Relations, Political Science, and Human Rights Program, Smolny College
- Postoutenko, Kirill**, Ph.D. in Russian Language and Literature, Moscow State University. Associate Professor, Programs in Literature and Sociology & Anthropology, Smolny College; Head of Sociology & Anthropology Program, Smolny College

**Pushkina, Daria**, Ph.D. in Political Science, University of Maryland. Associate Professor, International Relations, Political Science & Human Rights Program, Associate Dean of International Students, Smolny College

**Raskov, Danila**, Ph.D. in Economics, St. Petersburg State University. Associate Professor, St. Petersburg State University; Head of Economics Program, Smolny College

**Savchenkova, Nina**, Ph.D. in Philosophy, St. Petersburg State University; Associate Professor, St. Petersburg State University; Head of the Department of Philosophy and Psychoanalytical Criticism, Eastern European Institute of Psychoanalysis; Head of Performing Arts Program, Smolny College

**Semyonov, Alexander**, Ph.D. in History, Central European University. Co-editor of international journal *Ab Imperio*; Associate Professor, History of Civilizations Program, Smolny College

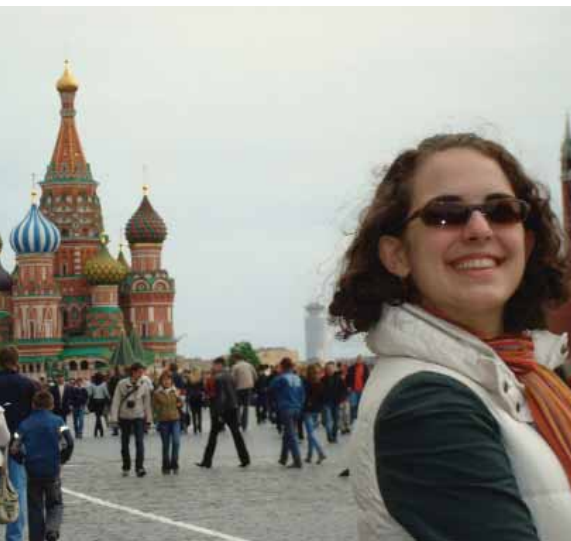
**Shakhnovich, Marianna**, Ph.D. in Philosophy, St. Petersburg State University. Professor and Head of Department of Philosophy of Religion and Religious Studies, St. Petersburg State University; Head of Religious Studies Program, Smolny College

**Yershov, Gleb**, Ph.D. in Art History, St. Petersburg State University. Associate Professor, St. Petersburg State University of Arts and Culture; Curator of Navicula Artis gallery; Associate Professor, Art and Architecture Program, Smolny College



WWW.SMOLNY.ORG





## PROGRAM COST

Bard and Smolny Colleges are committed to making study at Smolny affordable for you. We are happy to work with you on ways to do this, taking your specific financial situation into account.

### How can I Learn More?

We welcome your interest and questions! We encourage you to visit our website at [www.smolny.org](http://www.smolny.org) to learn more about life at Smolny. If you like what you see, please fill out our interest form online; we will contact you promptly! You may also contact us directly at [smolny@bard.edu](mailto:smolny@bard.edu) or (845) 758-7080.

In most cases, a semester at Smolny will cost no more than a semester at your home institution. Bard staff work closely with study abroad staff at your home institution to ensure that whenever possible financial aid packages, including Federal and State scholarships, will transfer. In situations where institutional aid does not transfer, you will be considered for a Bard-Smolny scholarship.

North American students at Smolny College pay Bard College tuition, which covers all course work, including the two-week Russian Language Intensive prior to your first semester, and the transfer of credit. Pre-departure training and orientation costs, the cultural program in St. Petersburg, and several overnight trips outside of St. Petersburg are included. Students are responsible for their own room, board, travel to and from St. Petersburg, and incidental expenses. Room and board in Russia are considerably less expensive than in North America or Western Europe. Below are estimated program expenses for one semester:

<b>Tuition*</b>	\$17,892
<b>Room/Board**</b>	\$2,100 - \$3,500
<b>Airfare</b>	\$1,300
<b>Russian Student Visa</b>	<i>Included in tuition</i>
<b>Accident and Sickness Insurance</b>	<i>Included in tuition</i>
<b>Estimated Personal Expenses</b>	\$1,200

\* 2008/2009 tuition figure. For current financial information please visit [www.smolny.org](http://www.smolny.org).

## BARD-SMOLNY PROGRAM SCHOLARSHIPS

If your institutional aid does not transfer to study abroad, we encourage you to explore funding and scholarship options with Bard's experienced staff. Smolny applicants may be eligible for generous fellowships from the Bard-Smolny program, based on academic achievement and financial need. To apply, you should submit a statement of need, a copy of your FAFSA form for the current academic year, and a copy of your home institution's most recent award letter with your program application.

## HOW TO APPLY

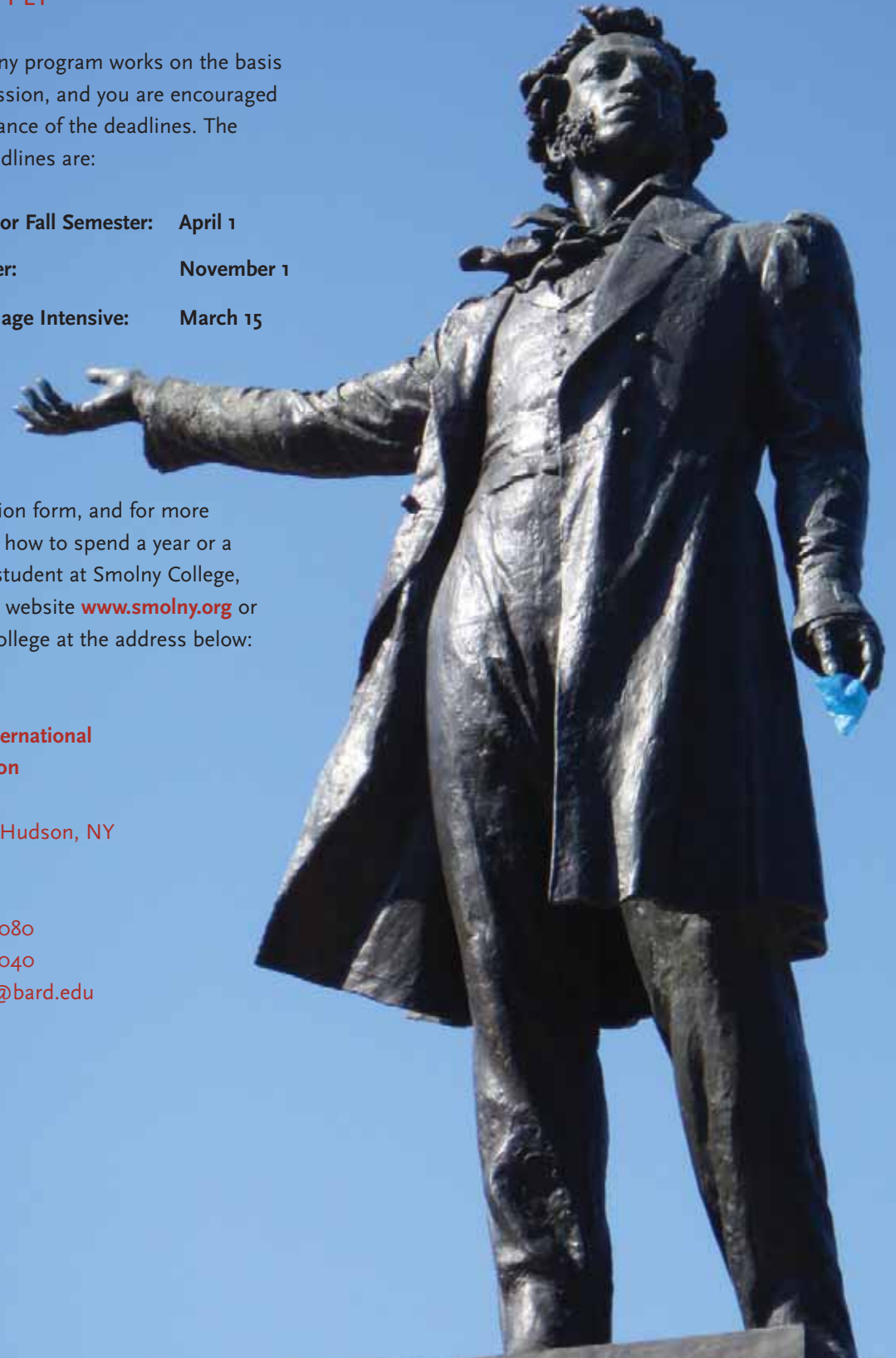
The Bard-Smolny program works on the basis of rolling admission, and you are encouraged to apply in advance of the deadlines. The application deadlines are:

<b>Academic Year or Fall Semester:</b>	<b>April 1</b>
<b>Spring Semester:</b>	<b>November 1</b>
<b>Summer Language Intensive:</b>	<b>March 15</b>

For an application form, and for more information on how to spend a year or a semester as a student at Smolny College, please visit our website [www.smolny.org](http://www.smolny.org) or contact Bard College at the address below:

**Bard College**  
**Institute for International**  
**Liberal Education**  
P.O. Box 5000  
Annandale-On-Hudson, NY  
12504-5000

**Tel.** (845) 758-7080  
**Fax** (845) 758-7040  
**E-mail** [smolny@bard.edu](mailto:smolny@bard.edu)

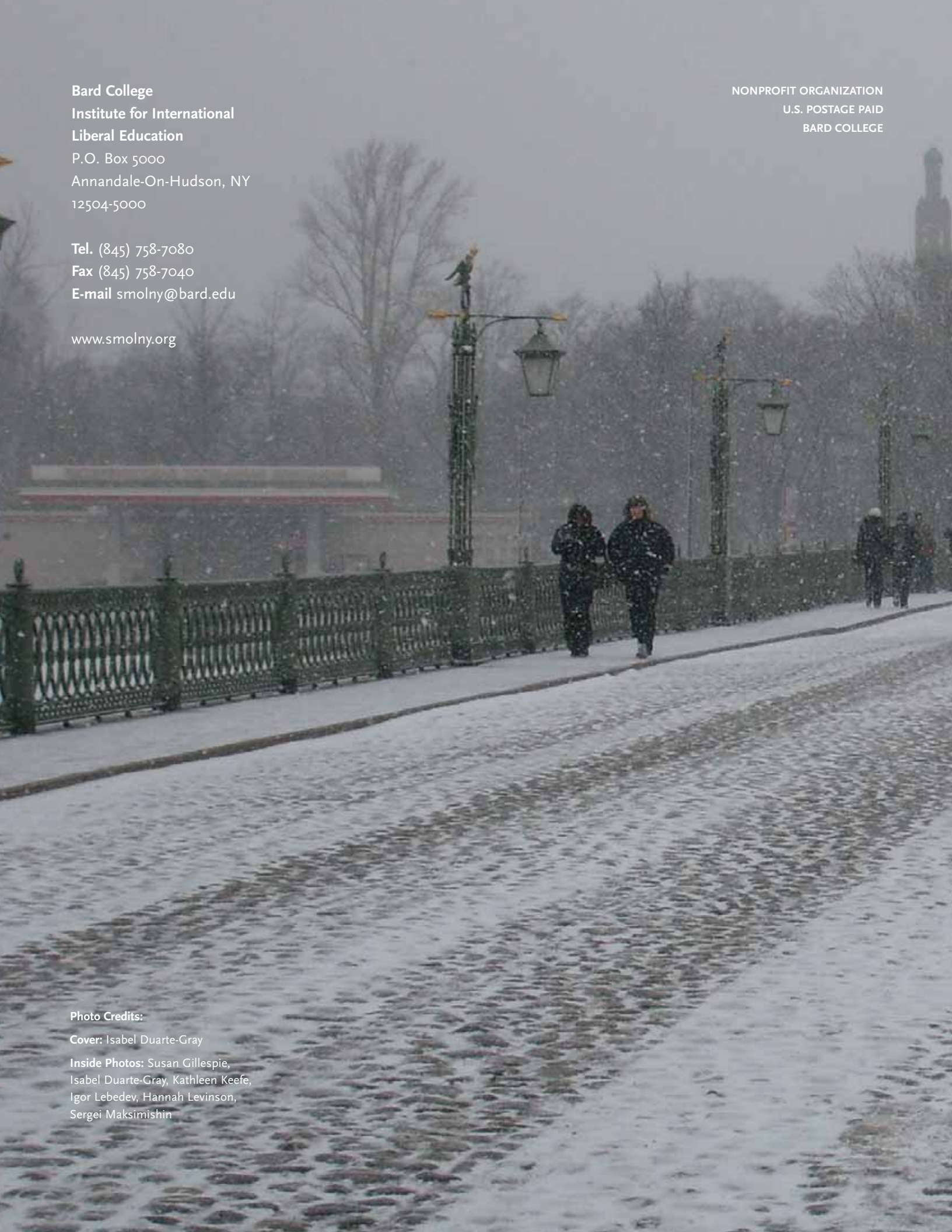


**Bard College**  
**Institute for International**  
**Liberal Education**  
P.O. Box 5000  
Annandale-On-Hudson, NY  
12504-5000

**Tel.** (845) 758-7080  
**Fax** (845) 758-7040  
**E-mail** [smolny@bard.edu](mailto:smolny@bard.edu)

[www.smolny.org](http://www.smolny.org)

NONPROFIT ORGANIZATION  
U.S. POSTAGE PAID  
BARD COLLEGE



**Photo Credits:**

**Cover:** Isabel Duarte-Gray

**Inside Photos:** Susan Gillespie,  
Isabel Duarte-Gray, Kathleen Keefe,  
Igor Lebedev, Hannah Levinson,  
Sergei Maksimishin