



Massey University
NEW ZEALAND



INTERNATIONAL
STUDENT GUIDE



Auckland
Palmerston North
Wellington



Te Kunenga
ki Pūrehuroa



Welcome

Every year, hundreds of international students from over 90 countries find a warm and welcoming environment at Massey University and an intellectual climate in which they are encouraged to excel in programmes that are innovative, progressive and inspiring.

We invite you to choose Massey University as your international study destination. As an international student at Massey, you will be part of a diverse community that values your contribution to academic and cultural life.

Massey International offers expert advice to students and processes applications for admission to all University programmes of study. Also there to help you, our experienced International Student Support team will ensure you enjoy your time at Massey University. We understand your needs and concerns and can provide assistance and advice - from pre-departure until your return home.

We welcome enquiries and applications directly from students, or through the services of our registered educational agents around the world.

international.massey.ac.nz

Massey Auckland





Massey Campuses and Cities



Massey Palmerston North

Located in New Zealand's sixth largest city of 80,000, Massey's original campus (1927) has 11,000 students. Truly a Student City, Palmerston North is friendly and welcoming, and has a low cost of living, including free travel on city buses for Massey students. Surrounded by beautiful mountain and rural scenery, "Palmy" is just two hours by car or train to Wellington, and the International Airport offers regular flights to Auckland (one hour), Australia and the Pacific Islands.



Massey Auckland

New Zealand's most modern university campus, Massey Auckland offers 70 majors to 7,000 students. Massey's "Innovative Campus" is known for its key business partnerships. The campus is just 20 minutes from the CBD of Auckland, New Zealand's commercial and economic centre and home to 1.3 million people. Sophisticated, multicultural and urban, Auckland has a pleasant climate, wonderful beaches and nearby islands to explore.



Massey Wellington

Massey's "Creativity" campus is centrally located in Wellington, Capital City, population 200,000. Compact and welcoming, Wellington City is packed with cafes, boutiques, and a colourful nightlife. Greater Wellington (population 450,000), is spread along 497 kilometres of coastline. The South Island is a short plane or ferry trip away and Auckland is one hour north by plane.

Massey Palmerston North



Massey Wellington





Academic Programmes

Massey University is characterised by the applied nature of many of its teaching and research programmes, and expertise in the areas of technology, science, applied science and business studies.

Programmes are offered by the five academic Colleges: College of Business, College of Science, College of Humanities and Social Sciences, College of Creative Arts, and College of Education. Our undergraduate, postgraduate and research programmes lead New Zealand in key fields.

Academic Programmes (By Interest Area)

Agriculture & Horticulture P

- Agribusiness ●
- Agriculture ●
- Horticulture ●
- Landscape Management ●
- Natural Resource Management ●
- Plant Biology ●
- Plant Protection ●
- Rural Valuation and Management ●

Animal Studies P

- Animal Production ●
- Animal Science ●
- Equine Studies ●
- Veterinary Nursing ●
- Veterinary Science ●

Arts & Humanities A P

- Classical Studies ●
- English ●●
- History ●●
- Languages ●
- Linguistics ●
- Maori Studies ●
- Museum Studies ●
- Philosophy ●
- Politics ●
- Religious Studies ●

Aviation P

- Air Transport Pilot ●
- Aviation Management ●

Business A P W

- Accountancy ●●●
- Agribusiness ●
- Applied Economics ●
- Economics ●●
- Enterprise Development ●●●
- Finance ●●●
- Financial Economics ●●
- Human Resource Management ●●●●
- International Business ●●●
- International Economics ●
- Management ●●●
- Marketing ●●●
- Marketing Communication ●●
- Sport Business Management ●●
- Valuation & Property Management ●●●

Communication, Journalism & Media

- Communication Management ●●●
- Expressive Arts ●
- Journalism Studies ●
- Media Studies ●●

Design A W

- Fashion Design ●
- Industrial Design ●●
- Interior Design ●
- Photographic Design ●
- Textile Design ●
- Transport Design ●
- Visual Communication Design ●●

Education/Teaching A P

- Education ●
- Educational Administration ●
- Physical Education ●
- Teaching (Early Years) ●
- Teaching (Primary or Secondary) ●●

Engineering, Technology & Construction

- Architectural Technology ●
- Automation and Control ●
- Bioprocess Engineering ●
- Biotechnology ●

- Chemical and Nanotechnology ●
- Computer Aided Design and Graphics ●
- Computer and Electronic Engineering ●
- Computer Systems Engineering ●
- Construction (Quantity Surveying) ●
- Design and Manufacture – Sports Equipment ●
- Electronic Engineering ●
- Engineering and Industrial Management ●●
- Environmental Technology ●
- Electronics and Communication Engineering ●
- Food Engineering ●
- Food Technology ●●
- Industrial Bioscience ●
- Information Engineering ●
- Mechatronics ●●
- Manufacturing Systems Engineering ●
- Multimedia Systems Engineering ●
- Packaging Technology ●
- Product Development ●●
- Software Engineering ●●
- Telecommunications and Network Engineering ●

Fine Arts W

- Painting ●
- Sculpture ●
- Photo Media ●
- Time-based Media ●

Food and Nutrition A P

- Food Engineering ●
- Food Technology ●●
- Human Nutrition ●●
- Nutritional Science ●●

Information Technology & Computing

- Computing ●●●
- Computer Science ●●●
- Data Mining ●●
- Decision Science ●●
- Electronics ●●
- Information Engineering ●
- Information Systems ●
- Software Engineering ●



Applying to Study at Massey University

Please refer to the application form enclosed in this Student Guide. Application forms and supporting information are also available at international.massey.ac.nz

Our website provides a full and detailed list of the steps in the application process.

application@massey.ac.nz

Scholarships, Awards and Loans

Financial Assistance is available to international students from various scholarships, awards or loan schemes. Those most commonly available are:

- NZ Development Scholarships
- New Zealand International Doctoral Research Scholarship
- Massey University Doctoral Scholarship
- Commonwealth Scholarships
- New Zealand International Undergraduate Fees Scholarship
- US Federal Aid Loans
- For further details, please refer to: international.massey.ac.nz

Land & the Environment P W

Earth Science ●
 Ecology ●
 Environmental Risk Management ●
 Geography ●
 Landscape Management ●
 Natural Resource Engineering ●
 Natural Resource Management ●
 Plant Science ●
 Rural Development ●
 Soil Science ●

Languages P

Chinese ●
 Japanese ●
 Spanish ●

Music A W

Classical Performance ●
 Composition ●●
 History and Analysis ●●
 Jazz ●●
 Ethnomusicology ●
 Music Therapy ●

Nursing and Health P W

Education ●
 Environmental Health ●
 Maori Health ●
 Midwifery ●●
 Nursing ●●

Sciences A P W

Agricultural Science ●
 Animal Science ●
 Biochemistry ●
 Biological Sciences ●●
 Biomathematics ●
 Chemistry ●
 Computer Science ●●
 Conservation Biology ●●
 Decision Science ●●
 Earth Science ●
 Ecology ●
 Genetics ●
 Geography ●
 Health Science ●
 Horticultural Science ●
 Mathematical Physics ●
 Mathematics ●●

Medical Laboratory Science ●
 Microbiology ●
 Physics ●
 Physiology ●
 Plant Biology ●
 Quarternary Science ●
 Soil Science ●
 Sport and Exercise Science ●●
 Statistics ●●
 Veterinary Science ●
 Zoology ●

Social Sciences & Psychology A P W

Defence Studies ●
 Development Studies ●
 Psychology ●●●
 Social Anthropology ●
 Social Policy ●●●
 Social Work ●●●
 Sociology ●

Sport A P W

Exercise Prescription and Training ●
 Management and Coaching ●
 Sport and Exercise Science ●●●
 Sport Business Management ●●

English Language and Foundation Studies

Students that do not meet direct entry into an academic programme may apply for a bridging programme through the Centre of University Preparation and English Language Studies (CUPELS). The programmes are designed to prepare students for English and/or academic entry to Massey University. CUPELS is located on all three campuses.

CAMPUS
LOCATION KEY

- A Auckland
- P Palmerston North
- W Wellington

Accommodation and Living

University Accommodation

Massey University offers a range of quality housing and living options on- and off-campus and in local homestay accommodation. Each room is single occupancy and includes a bed, desk, reading lamp, panel heating and wardrobe. 24-hour access to computer labs is available on all campuses. University housing is managed and regularly assessed by Massey University.

Massey Auckland

Massey Auckland provides self-catered, apartment-style living for students attending the Albany campus. Apartments are fully furnished, including kitchen utensils. The Village common rooms include cable TV and pool table, with close proximity to the Massey Recreation Centre. Facilities at Casa Bella include a tennis court, gym and swimming pool.

- Casa Bella Apartments (free shuttle bus to campus)
- Lucas Creek Village (10 minute walk to campus)
- Millennium Village (7 minute walk to campus)

Massey Palmerston North

Massey Palmerston North halls of residence are fully furnished including kitchen utensils, bed linen, digital sky television and a free weekly linen service. Students can choose between self-catered or meal plan options.

- Turitea Halls (2 minutes walk to campus)
- Moginie (2 minute walk to campus)
- The Courts (5 minute walk to campus)
- Atawhai (10 minutes walk to campus)
- Fergusson Hall (5 minute walk to campus)



Massey Wellington

Massey Wellington provides self catered, apartment style living for students attending the Wellington campus. Apartments are fully furnished including kitchen utensils. Regular social activities are scheduled throughout the semester for apartment residents.

- Basin Reserve (5 minutes walk to campus)
- Martin Square (5 minutes walk to campus)
- Te Awhina (5 minutes walk to campus)
- The Cube (5 minutes walk to campus)

accommodation.massey.ac.nz

Estimated Living Costs Per Year (42 Weeks)

Living Costs*	Auckland	Palmerston North	Wellington
Casa Bella @ NZ\$167/week	\$ 7,014		
Ruahine Flat @ NZ\$119/week		\$ 4,998	
The Cube @ NZ\$125/week			\$ 5,250
Food @NZ\$50/week	2,100	2,100	2,100
Utilities @ NZ\$25/week	1,050	1,050	1,050
Transport@ NZ\$25/week**	1,050		1,050
Total	\$ 11,214	\$ 8,148	\$ 9,450

*Selected living costs based on 2007 figures – estimates only.

**Massey Palmerston North students are provided with free city bus service.

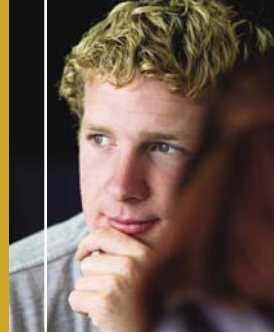
Applying for Accommodation

Accommodation can only be booked once you have received an Offer of Place. The Accommodation Application Form should then be returned as soon as possible.

If you are aged under 18 years at the start date of your course, you MUST live in university homestay accommodation. Please contact the International Student Support staff at your respective campus for more information.

accommodation.massey.ac.nz

University Facilities and Services



Massey provides an extensive range of student-centred facilities and services on all campuses.

Academic Support

Services to support academic studies include modern computer facilities, email and internet, a Learning Support Centre which runs regular workshops and individual consultations, Massey's Library Service, and a Disability Service for those with special needs.

Health and Wellbeing

The Massey University Medical Centre, the University Counseling Service and The Chaplaincy Service serve the medical and spiritual needs of students from all religions and traditions.

Campus Life and Leisure

Sport and recreation facilities include training rooms, group fitness studios, exercise classes, and playing fields. Massey Students' Associations are responsible for social events such as Orientation Week and the monthly campus magazine. Numerous clubs and societies range from Debating and Drama, to Snowboarding, and Martial Arts. Marae (meeting places) at Wellington and Palmerston North provide the opportunity to learn more about the unique Maori culture.

Leaving Massey

Career Information and Recruitment Offices provide career advice, job search strategies and information about graduate vacancies.

student-services.massey.ac.nz



Code of Practice for International Students

Massey University has agreed to observe and be bound by the Code of Practice for the Pastoral Care of International Students published by the Minister of Education. Copies of the Code are available on request from this institution or from the New Zealand Ministry of Education website at www.minedu.govt.nz/goto/international

Immigration

Full details of visa and permit requirements, advice on rights to employment in New Zealand while studying, and reporting requirements are available through the New Zealand Immigration Service, and can be viewed on their website at www.immigration.govt.nz

Eligibility for Health Services

Most international students are not entitled to publicly-funded health services while in New Zealand. If you receive medical treatment during

your visit, you may be liable for the full costs of that treatment. Full details on entitlements to publicly-funded health services are available through the Ministry of Health, and can be viewed on their website at www.moh.govt.nz

Accident Insurance

The Accident Compensation Corporation provides accident insurance for all New Zealand citizens, residents and temporary visitors to New Zealand, but you may still be liable for all other medical and related costs. Further information can be viewed on the ACC website at www.acc.co.nz

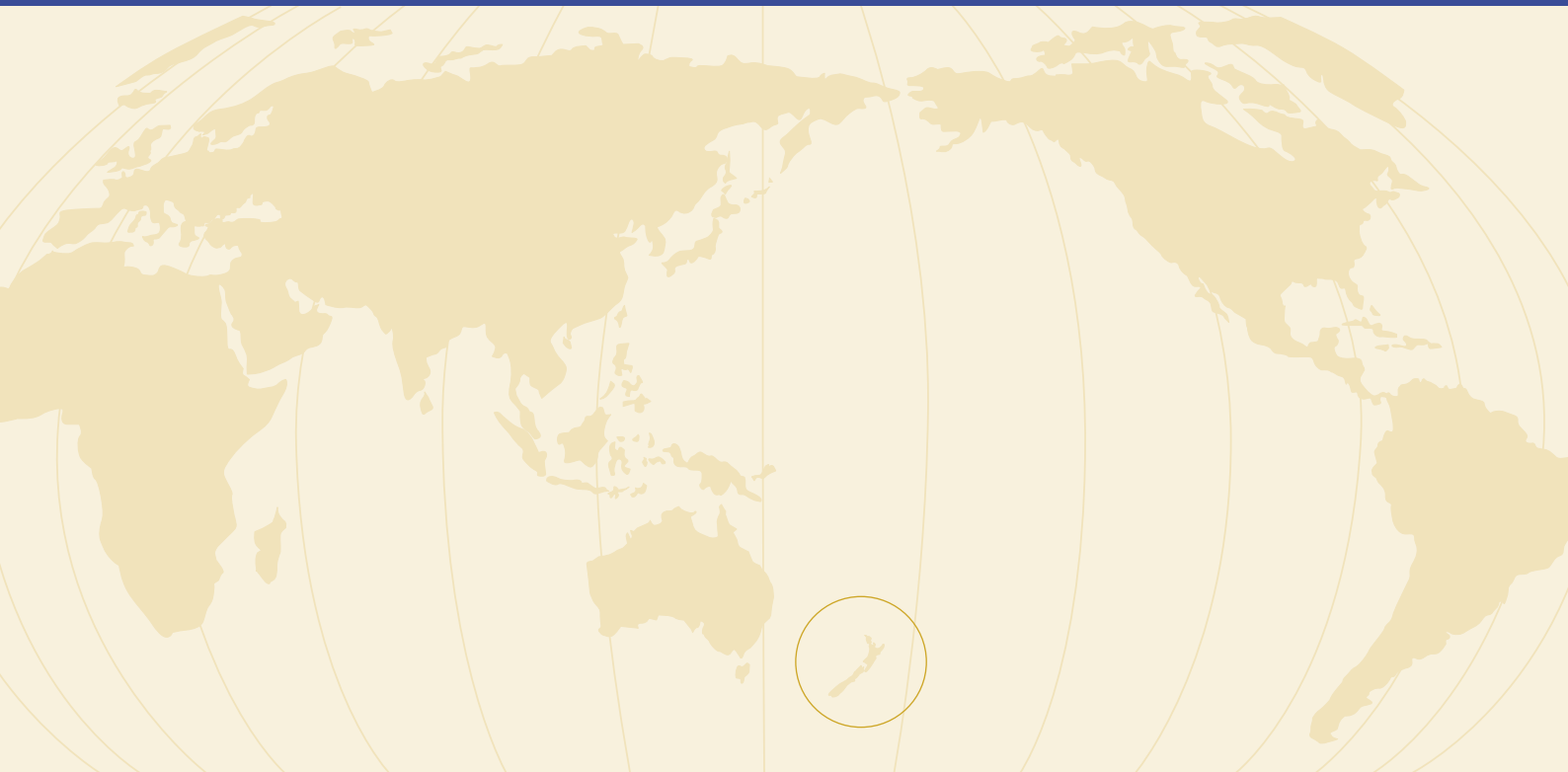
Medical and Travel Insurance

International students must have appropriate and current medical and travel insurance while studying in New Zealand.



Massey University
NEW ZEALAND

Auckland
Palmerston North
Wellington



Massey International

Massey University
Private Bag 11 222
Palmerston North 4442
New Zealand

Phone 64 6 350 5599
Fax 64 6 350 5698
Email international@massey.ac.nz
Website www.massey.ac.nz