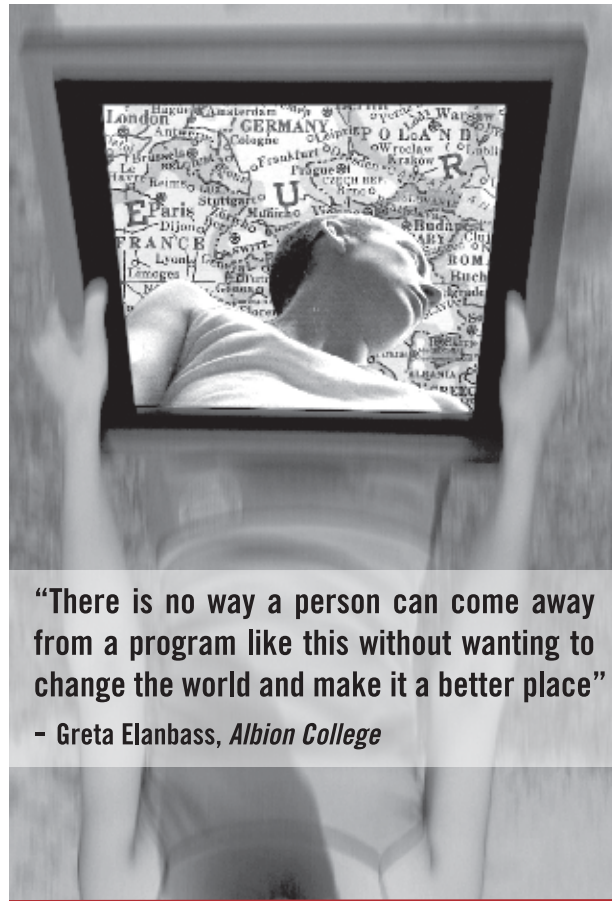


Comparative Women's and Gender Studies

FALL



"There is no way a person can come away from a program like this without wanting to change the world and make it a better place"

- Greta Elanbass, Albion College

PROGRAM DESCRIPTION

Since 1984, the Comparative Women's and Gender Studies in Europe (WGSE) program has offered students a unique opportunity to explore feminist theory in practice across Europe. The program examines the trends and dynamics of European social, economic, and political systems as they influence contemporary gender theory, policy, and women's identities. Following an orientation to the program, students participate in NOISE, a two-week summer school in WGS co-organized by Utrecht University and ATHENA, the European Network of Women's Studies. After NOISE, the WGSE participants spend the rest of the semester studying WGS in Prague, Berlin, Krakow, Utrecht/Amsterdam, and Istanbul. Students come face to face with leading theories in WGS and have the opportunity to test their knowledge while working on their independent research projects. Participants attend lectures and take seminars with Director Iveta Jusová, Ph.D. (pg. 3), as well as with NGOs, artists, activists, and professors from European universities.

ACCOMMODATIONS

Students stay in hostels, hotels, and homestays throughout Europe. All lodging is arranged by the Program Director prior to the start of the program to ensure suitable and reliable accommodations.

Explore and examine feminist and queer theory while conducting field research across Europe

Europe, Multi-Country



- Krakow**
Poland
- Prague**
The Czech Republic
- Berlin**
Germany
- Amsterdam and Utrecht**
The Netherlands
- Istanbul**
Turkey

HIGHLIGHTS

- Gain exposure to and inclusion into a developed network of feminist programs and organizations.
- Study feminist and queer theory and methodology while exploring five European countries.
- Develop and conduct an independent research project on a topic of your interest.

"Absolutely life changing event."

- Laura Michaelson, Hobart and William Smith Colleges

NOISE

The location of the NOISE (Network of Interdisciplinary Women's Studies in Europe) Summer School as well as its themes change every year. In 2010, NOISE was held at University of Granada on the following topic: "Performing European Feminist Features: 1968+1989." NOISE attracts leading scholars and graduate students from all over Europe and the world.

PREVIOUS RESEARCH PROJECTS

- Immigration and Muslim Women's Issues in the Netherlands and Germany
- Advertising in European Women's Magazines
- Sex Work, Legalization and Trafficking
- Same-Sex Marriages: A Question of Legitimacy, A Problem of Privilege
- Gender Issues in the Graffiti and Street Art in Berlin, Krakow, and Amsterdam
- New European Anti-Semitism
- Gender Identity and Gender-Segregated Bathrooms
- Domestic Violence Shelters in Poland, Germany, and Holland
- Trans Identity from a Cross-Cultural Perspective
- Public Art Addressing Violence Against Women

COURSES

Each course is 4 semester credits. Full course descriptions online.

AWS 240 Situated Feminisms: Socio-political Systems and Women's Lives

This course examines the historical emergence and contemporary conditions of feminist movements throughout Europe. Topics such as reproductive rights, immigrant/refugee issues, LGBTQ politics, prostitution, and trafficking are addressed comparatively, stressing their situated nature and the different sociopolitical national frameworks in which they occur.

AWS 250 Issues in Feminist Methodologies

This course is devoted to questions of (1) theory: what are the contours of feminist research in social sciences and humanities? and (2) practice: how does one actually conduct feminist research? Some of the further questions pursued in this course include: What is the relationship between methodology and knowledge claims in feminist research? How do language and narrative shape experience? How is the traditional relationship between the researcher and the examined object redefined in feminist research?

AWS 350 Comparative Feminist Theories

This course frames several of the central debates within Continental and Anglo-American feminist theories in the context of emerging local and global pressures on European women's movements. Students consider affinities and divergences among different theory models, questioning the ability to transfer feminist concepts across cultures and languages.

AWS 396 Independent Field Research

Students select a topic of interest that can be explored in the context of the program, develop and execute research methods, and present their work in both written and oral forms. Using readings and field research to record observations and experiences, including critical examination of the researcher's positionality, students take part in continual discussion and analysis of their research.



Experience



Engage



Explore