

Will-Excel TESOL

Training Unforgettable Teachers

Diploma Course



As you evaluate our TESOL program and others, think about the following questions.

- **Why not earn money while you study?**
- **Why not earn your TESOL Diploma instead of just a certificate?**
- **Why not gain real teaching experience while you study?**
- **Why not study TESOL in the world's largest and fastest growing TESOL market?**
- **Why not learn standard Chinese while you study and teach?**
- **Why not have your housing and meals paid for while you study?**
- **Why not become a Will-Excel TESOL Unforgettable Teacher?**

Benefits	4
Course Information	6
INPUT SESSION TOPICS	6
PROFESSIONAL DEVELOPMENT PROJECTS	7
The One-to-One Project	7
The Materials Project	7
Career Planning Project.....	7
LIFE IN HARBIN	8
FAQ.....	9
HARBIN DESCRIPTION	16

NEXT PROGRAM START DATES

Available at <http://www.WillExcelTESOL.com>

Our **In-China TESOL Diploma** combines all the benefits of a **160 hour TESOL** course with **500 hours of real teaching experience** and **Chinese language learning**.

Benefits

During your month of training in Harbin:

- **160 hour government accredited TESOL training course**
 - **Completed over 4 weeks**
 - **At least 10 hours of evaluated teaching practice**
 - **At least 10 hours of experienced teacher observation**
- **Free Mandarin Chinese training**
 - **20 hours of group classes**
 - **Home study audio course**
 - **In Harbin, China's most standard Mandarin city**
- **Free drives to and from off-site classes**
- **Free shared accommodation with a private bedroom**
- **Free lunch and dinner on site**
- **Free airport pick up**

During your teaching term:

An integral part of our program is the teaching term that follows your month of training in Harbin. Will-Excel TESOL has partnered with a number of schools throughout China. These schools provide you with paid teaching terms.

During the teaching term, Will-Excel TESOL works closely with your sponsor school to evaluate your teaching and provide you with regular feedback. You earn your Will-Excel TESOL Diploma once you have completed 500 hours of evaluated teaching practice.

The below benefits are guaranteed by all of our sponsor schools. When you are offered a position in our program with a specific sponsor school, the complete details of their benefits will be sent to you to review before accepting the position. Throughout your teaching term you are guaranteed:

- **TESOL Tuition Sponsorship**
- **500 hours of full-time teaching experience**
- **Salary:**
 - **A minimum of 4000 RMB/month**
- **Free accommodations**
- **Work resident permit**
- **Higher salary and additional benefits when extending beyond the teaching term.**

Apart from the above guaranteed benefits, each school offers various benefits. The exact details of your benefits package is forwarded to you once you receive an offer from one of our sponsor schools.

It is also possible to complete our course without having to complete a teaching term arranged by Will-Excel TESOL. See below for details.

WILL-EXCEL TESOL DIPLOMA



Earn a salary while you study TESOL.
 When you finish our course you'll have
over 500 hours teaching experience,
beginner-intermediate Mandarin,
 and your **government certified TESOL Diploma.**



Don't waste your time and money studying a TESOL course that gives little if any real teaching experience.

LIVE IN CHINA, STUDY, AND TEACH WITH US!

Our program includes the **Best TESOL** course available plus: **Free food, Free apartment, Free Mandarin lessons, and a Paid teaching term.**

Compare us to other programs. The table below shows how we are **superior to all other TESOL programs.**

	Online	Visiting School	Hometown School	Other Learn Abroads	Will-Excel TESOL
Teaching Practice (Hours)	X	X	0 - 4	0 - 10	500+
Real Students	X	X	X	?	Yes
Exotic Location	X	X	X	Yes	Yes
Placement Services	?	?	?	?	Yes
Credibility	?	Yes	Yes	Yes	Yes
Salary	X	X	X	?	Yes
Free Apartment	X	X	X	X	Yes
Free Meals	X	X	X	X	Yes
Free Language Lessons (Hours)	X	X	X	0-6	60
Cost	US\$300-1000	US\$1000-2000	US\$1000-3000	US\$1500-2500	*US\$200

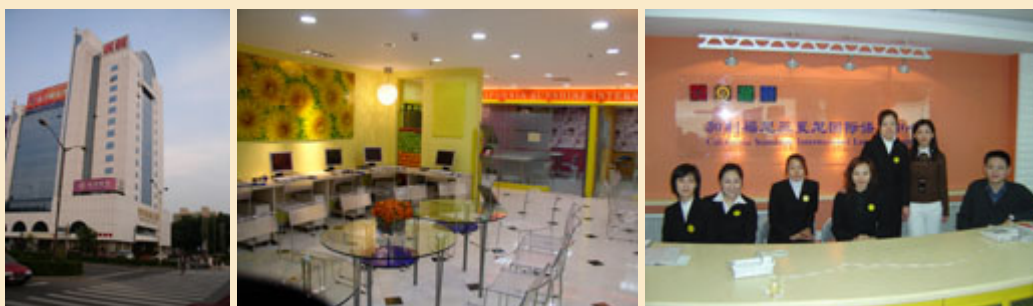
* As there are a limited number of spaces in our program, as a sponsored participant you pay US\$200 as a non-refundable registration fee. This is the only fee you pay and you receive a monthly salary throughout your teaching term. So, you earn money through the **Will-Excel TESOL** program rather than it costing you money. Our sponsor schools are sponsoring your TESOL Diploma and therefore they will pay all of your remaining fees directly to us. The salary and benefits listed above are what you receive. You do not pay any additional fees from this salary amount.

Course Information

The **WILL-EXCEL TESOL Diploma Program** prepares our trainees for the booming demand for exemplary TESOL instructors world-wide, specifically targeting those wanting to work in China. The Program is unlike any other existing certification program in that it provides:

- A Thorough Foundation of TESOL Theory (Input Sessions)
- Over 500 Hours of Practical Teaching Experience
- Up-To-Date Innovative Methodology
- Our Trademark “Focus On China” Case Study (More on This Below).

The **WILL-EXCEL TESOL Institute** is in partnership with the highest class school in Harbin, certified as a Harbin model school: *California Sunshine International Language Center (Harbin)*. This partnership means that you will gain experience teaching real language learners of all ages and levels.



Throughout the course’s teaching practice sessions, you will teach classes with three distinct age-groups: children, teenagers and adults. This type of experience is not offered by other certification programs and is a unique feature of **WILL-EXCEL TESOL**. You will develop lesson plans under the supervision of experienced teachers, observe experienced teacher taught classes, as well as, of course, teaching classes yourself. This opportunity will allow you to apply both practical and theoretical techniques learned in the course’s input sessions.

The **WILL-EXCEL TESOL Certification Program’s** intensive course incorporates classroom knowledge and practical teaching experience with professional development projects.



This ensures that you receive **SUPERIOR TRAINING** and are prepared for the **BEST JOBS** that **CHINA** and the **WORLD** have to offer.

INPUT SESSION TOPICS

- TESOL Teaching Approaches (Methods and Techniques)
- The Learning Process: Language Acquisition
- Introduction to Linguistics and Phonology
- Classroom Management (Content and Conduct)
- Teaching Vocabulary and Illustrating Meaning
- Task Based Learning

- How to Correct Learner Errors
- The Receptive Skills: Listening and Reading
- The Productive Skills: Speaking and Writing
- Writing Lesson Plans: Creating Aims and Staging Lessons, Using Practice Activities, Language Analysis and Anticipating Problems
- Teaching Children
- Teaching Business English and English for Specific Purposes
- Making the Most of Textbooks

Teaching Grammar

Also covered in class is an in-depth study of the English language's essential grammar points. This prepares you to effectively teach grammar in the classroom.

- Tense and Time
- How to Use Timelines
- Relative Clauses, Conditionals, Modal Verbs and Voice
- The Nine Basic Parts of Speech
- Sentence Diagramming
- English Lexicon Across Borders

WILL-EXCEL TESOL's trademark "Focus on China" case study separates our certification program from others by providing an immersion experience in China's official language (Mandarin, or, Putonghua). You will receive 60 hours of in-class language training with a native Mandarin speaker plus you will cover topics in the classroom that will specifically prepare you to teach English to Chinese students:

- Chinglish: Linguistic and Cultural Impact
- Anticipating and Analyzing Common Chinese Errors
- The Chinese Education System
- Contrast Studies: Structural Difference between English and Chinese
- Chinese Language Habits and Their Influence
- Culture Shock: Learning to Assimilate into Your New Home

PROFESSIONAL DEVELOPMENT PROJECTS

The One-to-One Project

Following the "Teaching One-to-One Classes" input session, you will be paired with a student. With this student, you will conduct a needs analysis session to prepare yourself and the student for 3 one-hour private classes. This aspect of our course will allow you to hone in on your student's particular needs and develop strategies to address the student's weaknesses and reinforce their strengths.

The Materials Project

You will develop two different sets of materials to use in the classroom, which can be adapted from course textbooks, internet resources and your own imagination. These materials must be sturdy and transportable. Later in the course, you will present to our trainers how the materials were used in class, how they can be improved, and what other functions they could serve in the future. Developed materials can be prepared to function as, but not limited to, props, audio or visual media, flashcards and class handouts, but may not be copied from commercial sources.

Career Planning Project

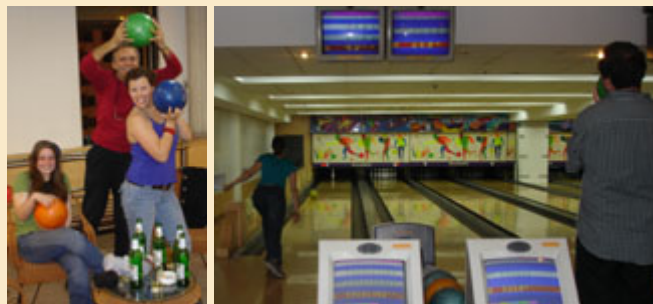
In addition to the courses in-class training and teaching practice, trainees will also spend time on Career Planning. This includes an input session on building a resume specifically for entering the TESOL field, an on-going portfolio development project which includes sample lesson plans, the trainees resume and a cover letter, interview techniques and researching future employers.

LIFE IN HARBIN

There are lots of activities to do with your classmates, co-workers and other friends in Harbin.



Besides dinners and karaoke, there are a variety of sporting activities, from bowling and pool to badminton and ping pong. Some of us regularly go to gyms to work out and there are other activities organized by other foreigners in town.



For those less sports-inclined, there are also poker nights, movie nights and trips to the pubs or clubs.



On holidays, you can visit nearby attractions, including: skiing, hiking, rafting, and scenic locations.



Chinese and Western festivals are another good reason to celebrate.



FAQ

1. **What is the difference between TESOL, TESL and TEFL? What is CELTA?**
2. **Can I teach in other countries?**
3. **What are the course fees?**
4. **Where will I live?**
5. **What will I eat?**
6. **What will my healthcare be?**
7. **What is the state of healthcare in China?**
8. **How do I arrange my flight?**
9. **Which vaccinations do I need?**
10. **How much money should I bring?**
11. **How can I get a working visa?**
12. **What should I bring?**
13. **Should I bring my own computer?**
14. **What kind of students will I teach?**
15. **How will I get to class?**
16. **Will I have course material to teach from?**
17. **What's your dress code?**
18. **Will I have any office work to do?**
19. **What will my schedule be like?**
20. **What will I do in my spare time?**
21. **Will I have Internet access?**
22. **What are the holidays?**

23. **What places can I travel to?**
24. **Is Harbin a safe place?**
25. **Why should I earn my TESOL abroad?**
26. **Why should I take the Will-Excel TESOL course?**
27. **I haven't studied grammar in a long time? Is that a problem?**
28. **Can I get a job without a degree?**
29. **How do I know if I am suitable?**
30. **What opportunities are there for me after the course?**
31. **What is sponsorship?**
32. **I do not qualify for sponsorship. Can I still participate in the course?**
33. **What are the differences between the sponsored and self-funded options?**
34. **What is the difference between your TESOL certificate and your TESOL diploma?**

1. **What is the difference between TESOL, TESL and TEFL? What is CELTA?**

These terms refer to the same type of course. TESOL (Teaching English to Speakers of Other Languages) TEFL (Teaching English as a Foreign Language) TESL (Teaching English as a Second Language) CELTA (Certificate for English Language Teaching to Adults) is a brand name of a TESOL course from England.

2. **Can I teach in other countries?**

Upon graduation we give you 2 copies of your diploma. One for job applications in China and one for other countries. Both are issued by the Will-Excel TESOL Institute (Canada) and the one for the Chinese job market is also certified by the local Chinese Education Bureau. Our courses exceed international standards of Course Instruction and Teaching Practice and are internationally recognized. Therefore, you can use your diploma to apply for jobs around the world.

3. **What are the course fees?**

The total cost of the course is US\$1500, with two methods of payment, either sponsored or self-funded.

Sponsored participants: The only fee that you will pay is the US\$200 non-refundable registration fee. Your Sponsor school is sponsoring your TESOL Diploma and therefore they will pay the remaining \$1300 directly to us over your teaching term. The minimum salary amount listed above and the salary amount offered to you with an offer of sponsorship are net of TESOL sponsored tuition. Therefore, the monthly salary amount you are offered is the amount you will receive each month. You do not pay any TESOL fees from this salary amount.

Self-funded participants are responsible for paying their own tuition fees (\$1500 USD). This can be done in two ways:

- Option #1: \$500 registration deposit and \$1000 before the course begins. You are issued a TESOL certificate upon completion of the first month of training.
- Option #2: \$500 registration deposit, \$250 before the course begins and 6 monthly payments of \$125 once you begin teaching. You are issued a letter of completion that states that you have completed the training portion of our program. This letter is used to help you procure your first job. A certificate/diploma is issued once all tuition payments have been received.

4. **Where will I live?**

All of our teachers share free, furnished apartments throughout their month of training in Harbin which includes free utilities and internet. Upon arrival, you pay a ¥50 RMB (~US\$7) key deposit which is returned when you return your keys and depart to begin your teaching term.

You will have free accommodation throughout your teaching term at your sponsor school. (Details provided with sponsorship offer.)

5. **What will I eat?**

Throughout the month of training, we provide lunch and dinner on site, free of charge. Of course you can choose to prepare your own meals at home or eat at local restaurants.

6. **What will my healthcare be?**

We do not provide medical coverage during your month of training. If you want health coverage during this month, you can arrange to either purchase travel insurance from home or Chinese health insurance once you arrive in Harbin.

Throughout your teaching term, your sponsor school offers medical coverage. (Details provided with sponsorship offer.)

7. **What is the state of healthcare in China?**

Medical care is good in China but staying in hospitals for any length of time is not very comfortable. Dental and vision care are very cheap. Several of our teachers have chosen to get a lot of dental work done, while here, for a fraction of the Western cost. Prescription glasses are also a fraction of the Western cost.

8. **How do I arrange my flight?**

Harbin has direct international flights from Russia, South Korea, Japan and Los Angeles. But most other flights connect through Beijing or Shanghai. If you're coming from the northern hemisphere don't bother checking Hong Kong or Shanghai flights since it costs nearly as much to get from there to Harbin as it costs to get there from the West. Coming through the southern hemisphere, most flights connect through Singapore, Hong Kong and Shanghai.

9. **Which vaccinations do I need?**

Most visitors get immunizations against tetanus, typhoid and diphtheria (a common shot that people get when they travel almost anywhere) plus most people get a Hep-B vaccination since the disease is common in China. However, Hep-B needs 3 shots spaced over time so most people get it done after arrival in China, if they want it. The Chinese government does not require any vaccinations. However, before you can get a working visa or a work resident permit, you must have a health check. They check your general health but are primarily checking for Hep-B, TB, HIV and Syphilis.

10. **How much money should I bring?**

It's easy to live on US\$200 a month. Some people spend much more than necessary because they frequently go out to western-style bars and restaurants. We recommend that you bring at least US\$500 as it may be two months before you receive your first salary. We recommend that any money you bring with you be in US cash. Bank cards can be used to make withdrawals from your Western account but not deposits. If you bring travelers checks, you will get a slightly lower exchange rate. Basically everything is done in cash in China. Therefore, schools pay teachers in cash as well.

11. **How can I get a working visa?**

You will enter China either on a tourist visa or work visa. Once you begin your teaching term, this will need to be converted into a work resident permit. Whether you apply for a tourist or a work visa depends on your sponsor school. (Details provided with sponsorship offer.)

You can apply for a 90 day visa at the nearest Chinese consulate or embassy. If you're not close to one, there are companies that you can find on-line which will process your application for you.

12. **What should I bring?**

There are no really essential items to bring since almost everything can be bought locally. 95% of new arrivals over pack. By the time people are ready to return home, they have bought so much that they leave most of their original belongings behind. Some Western spices cannot be found and most Westerners notice a small food item that they can't locate. New shoes may be a worthwhile thing to bring. Good shoes in China are no cheaper than in the West, the quality is often a problem and large sizes may be hard to find. There are only a couple brands of Antiperspirant. It's good to have a few small things from home to give as gifts to friends (dollar store type things). Coins or stamps from home are also good. See *Harbin Information* on our web site for more packing ideas.

13. **Should I bring my own computer?**

Bring a laptop if you have one. You'll find it useful and they are more expensive here. Don't bring a full desk-top computer. They are too bulky. If you are planning on making China your home for an extended period, you can leave your monitor and case at home and only pack the internal cards. A new case and used monitor will have you up and running here at little cost. You can also buy a full desktop system here for about the same price as in the West.

14. **What kind of students will I teach?**

All schools value flexible teachers since they are able to effectively deal with wide ranges of student ages and levels. Therefore during your month of training you will teach students of a variety of ages and levels.

The exact type of students that you have during your teaching term will depend on the sponsor school that sponsors your diploma. (Details provided with sponsorship offer.)

Classes mostly focus on oral English or using oral methods to teach underlying structure. Students in China tend to learn vocabulary and grammar in their regular classes but cannot use what they have learned. This is the primary focus of our course.

15. **How will I get to class?**

We provide transportation to and from off-site classes during your month of training. Transportation during your teaching term depends on your sponsor school. (Details provided with sponsorship offer.)

16. **Will I have course material to teach from?**

Yes. Text books and additional materials are provided. We also encourage teachers to blend current events and appropriate activities into classes whenever possible. Some classes have a very specific curriculum to follow. This curriculum must be completed each class before any additional materials or activities can be added. Although not required, some teachers bring materials with them that they find are particularly useful.

17. **What's your dress code?**

Teachers are expected to dress professionally. That does not mean they must wear a suit and tie or a dress. They must look appropriate for an office environment. They are expected to wear at least "business casual / smart casual".

18. **Will I have any office work to do?**

Some sponsor schools have some office duties. (Details provided with sponsorship offer.)

Typical office duties consist of small administration duties, organizing special events such as English Corners, being responsible for some aspect of the school such as updating a bulletin board, working on

designing tests, developing or distributing questionnaires, etc. They may also include doing marketing presentations or attending outside events to promote the school. If a teacher has a special ability such as ad design, computer skills, etc. they may be asked to use office hours on related tasks. If your sponsor school has specific office duties beyond these, they will be outlined when we offer you a position in our program.

19. **What will my schedule be like?**

The first four weeks will be a full-time intensive study term and you will teach your first classes early in your course. In addition to TESOL input sessions, you will also have 17 hours of Chinese language classes, at least 10 hours of evaluated teaching practice, 30 – 40 hours of lesson preparation (for each hour of teaching practice, new teachers generally spend 3 – 4 hours preparing a lesson plan), 10 hours of observing experienced teachers (you may request to observe more classes if you like), plus time spent outside of class studying, working on professional development projects and completing Chinese language homework.

During your teaching term, your teaching schedule depends on your sponsor school. Throughout your teaching term you will have 2 hours a week of Mandarin language classes. Some teachers have a few heavy class days and more time off the rest of the week while others teach a little each day.

20. **What will I do in my spare time?**

Harbin is a large city with the same conveniences and entertainment venues available in the West: pool halls, bowling alleys, gyms, swimming pools, movie theatres that show some of the biggest blockbuster movies in English, and a few bars that are frequented by many of the local Ex-pats. For entertainment at home, many people download western TV shows or watch movies on DVD. Every movie and syndicated TV show is available on DVD, which are quite cheap (less than US\$1). Once you have settled in at your sponsor school, you can sign up for classes in Chinese painting, calligraphy, Kung Fu, Tai Chi, etc. When you go out with Chinese friends, you will most likely go to a restaurant where you will eat, drink, chat and sing karaoke.

21. **Will I have Internet access?**

During the month of training, you will have internet access on your apartment computer. During your teaching term, internet access options vary depending on the sponsor school. (Details provided with sponsorship offer.)

22. **What are the holidays?**

There are two 5-7 day long national holidays each year, in February and October. There are also several other single-day holidays during the year. Whether these holidays are paid or unpaid varies by school. Some sponsor schools also include additional holidays. (Details provided with sponsorship offer.)

23. **What places can I travel to?**

There are many scenic locations within a few hours of Harbin including summer getaway spots and winter ski hills.

Within an overnight train ride from Harbin: Beijing, Dalian (Seaside), or BeiDaiHe (Old section of Great Wall).

China is a big and diverse country. No matter where your sponsor school is located, there will be local scenic and historical places to visit. You may take advantage of the 2 long national holidays each year for extended trips.

24. **Is Harbin a safe place?**

Harbin is a very safe city with little violent crime. Like most places, people recommend being careful in scarcely populated areas after dark and some bars have bad reputations. However, pickpockets are common

so keeping valuables out of external pockets is the rule. Except for the pickpockets, Harbin's crime rate is low.

25. **Why should I earn my TESOL abroad?**

Living abroad is an important aspect of learning to teach abroad and teaching experience with real language learners is required to assimilate the materials that you are studying in your input sessions.

Many school managers have told us that newly arrived teachers seem as though they have not really taken a TESOL training course because they are not prepared to start teaching classes. This is because their courses didn't include real teaching experience.

In fact, most elements of learning how to teach, can only be learned after you teach your first couple classes. So, if you study for weeks or months from texts and classes but have not yet taught real language learners, your time studying TESOL will not be well spent.

Just as a rocket can only be guided after it's launched, a TESOL teacher can only begin to really learn after he/she has started teaching.

This is why it is not only important to study TESOL abroad, but to choose a program that includes substantial teaching practice with real language learners.

26. **Why should I take the Will-Excel TESOL course?**

You earn a salary while you earn your TESOL Diploma.

When you finish our course you'll have over 500 hours teaching experience, beginner-intermediate Mandarin, and your TESOL Diploma.

You would be wasting your time and money studying a TESOL course that gives little if any real teaching experience.

Our program includes the best TESOL course available plus: free food, free accommodations, free Mandarin lessons, and a paid teaching term.

27. **I haven't studied grammar in a long time? Is that a problem?**

You already have a superior understanding of grammar. You use it everyday when you speak. We'll teach you everything you need to know in order to teach grammar to all levels of students.

- Basic grammar terminology
- Tense and Time
- How to use Timelines
- Relative Clauses, Conditionals, Modal Verbs and Voice
- The Nine Basic Parts of Speech
- Sentence Diagramming
- English Lexicon across Borders
- Anticipating and Analyzing Common Chinese Errors
- TESOL Teaching Approaches, Methods and Techniques

28. **Can I get a job without a degree?**

Anyone can be a great teacher. All you need is:

- A love of learning

- A playful attitude
- Interpersonal skills
- A good energy level
- And the right TESOL training

Our Diploma meets the hiring requirements of many schools, so you will have many employment opportunities. Many schools hire our graduates without a degree. However, some schools and universities also require a degree.

29. **How do I know if I am suitable?**

See “Apply Now” on our website for more information.

30. **What opportunities are there for me after the course?**

Our sponsor schools regularly ask our graduates to extend their contracts after they have completed the teaching term. With these extensions come more income and other benefits.

Or you may choose to seek a teaching position with another school in another part of China.

Some of our graduates choose to leave China to teach in other countries. Our program prepares you for a world of opportunities.

Our parent company is also active in many business areas. If you are interested in pursuing a business opportunity, we may be interested in a joint venture or cooperating with you.

31. **What is sponsorship?**

Many participants are sponsored by Will-Excel TESOL sponsor schools. These schools pay your tuition fees on your behalf.

If you do not qualify for sponsorship, or if apply under our self-funded option, you may still participate in our program.

32. **I do not qualify for sponsorship. Can I still participate in the course?**

Yes. Providing you pass the application screening process, you can participate in our program through our self-funded option.

33. **What are the differences between the sponsored and self-funded options?**

The self-funded option is the same as the sponsored option in that it includes a 160-hour TESOL certification course, free accommodations throughout the course (accommodations may be shared), free meals (lunch and dinner), transportation (when applicable), 17 hours of Mandarin Chinese classes, and additional Mandarin home study materials. We also offer job placement assistance. Our goal is to find you a job before the course finishes. The main differences are:

- Self-funded participants are responsible for paying their own tuition fees (US\$1500).
- Self-funded participants are issued a TESOL certificate upon completion of the first month of training and receipt of all tuition fees. These teachers can upgrade this certificate to a TESOL Diploma after they have taught 500 hours for which we have received student evaluations through their employer.
- We send these teachers’ application packages to over 100 partner schools throughout China as soon as they arrive in Harbin for training. As it is the teacher’s responsibility to choose their own employer, they may also decide to apply to other schools with which they would like to work. Our goal is to find these participants a job before the course finishes.

34. What is the difference between your TESOL certificate and your TESOL diploma?

Will-Excel TESOL issues both government accredited certificates and diplomas. Our Diploma signifies that you have not only completed the 160-hour TESOL training course, but also have a substantial amount of teaching practice.

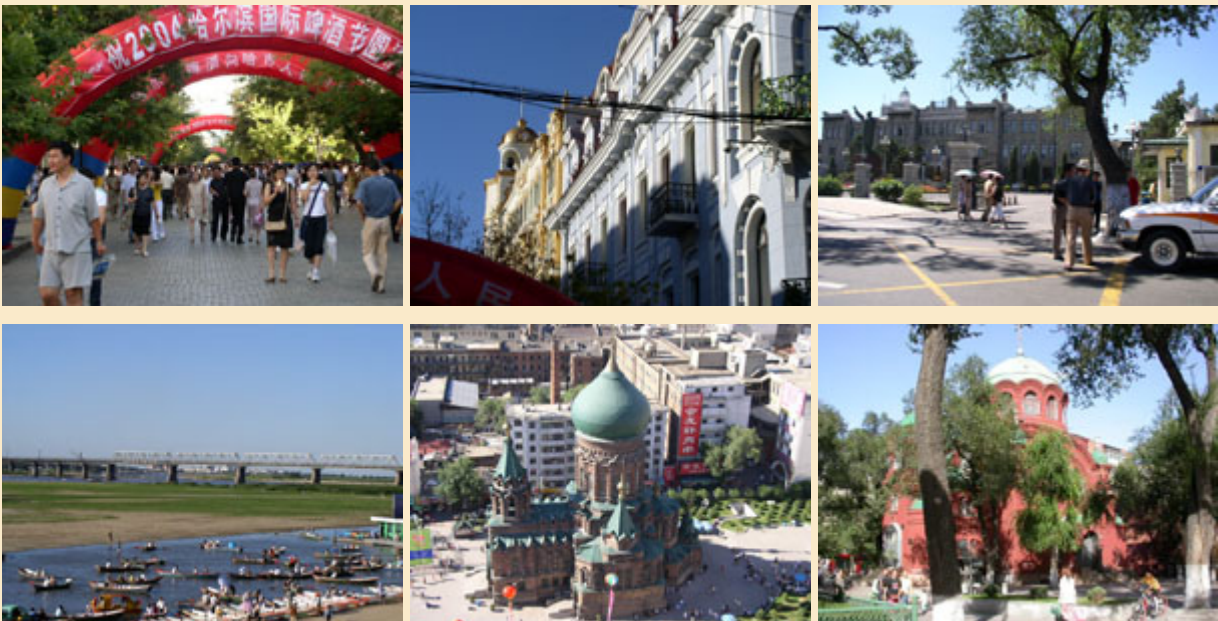
A certificate is awarded once you have completed the 160-hour TESOL training in Harbin and your TESOL tuition fees have been paid in full. Diplomas are issued once you have taught 500 hours for which we have received your student evaluations through your employer.

HARBIN DESCRIPTION

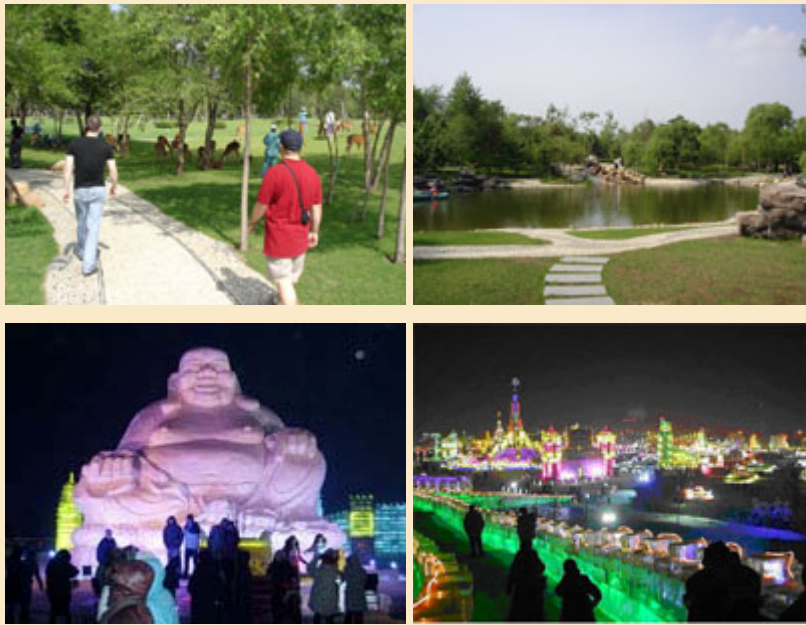
Harbin officially has about 10 million people, one of China`s 10 largest cities. However, Chinese cities cover large areas and therefore count many people that live in the surrounding area. Harbin`s city proper has about 4 million.



Harbin is rich in history, having been under Russian control for many years before the founding of the PRC in 1949. Therefore, it has a mix of Chinese and Russian architecture.



Harbin has many parks to visit in the summer and unique ice and snow sculptures in the winter.



Shopping for daily needs can be done at the local shops, street markets or if you prefer you can visit one of the Western style stores such as Walmart or Carrefour. Likewise, most of your restaurant meals will be Chinese. However, if desired you can also eat at McDonalds, KFC, Pizza Hut or have international foods including Western style, Russian, Japanese, Korean and Arabian.

Shopping for special Chinese products can also be interesting and fun.



Whether you'd like to meet local Chinese or people from across the globe, there are plenty of unique characters to make friends with in Harbin. A significant part of your Chinese experience will be the people you become friends with.



See our next program start dates at <http://www.WillExcelTESOL.com>

With limited space, the programs fill up fast so visit our site www.WillExcelTESOL.com and apply today!